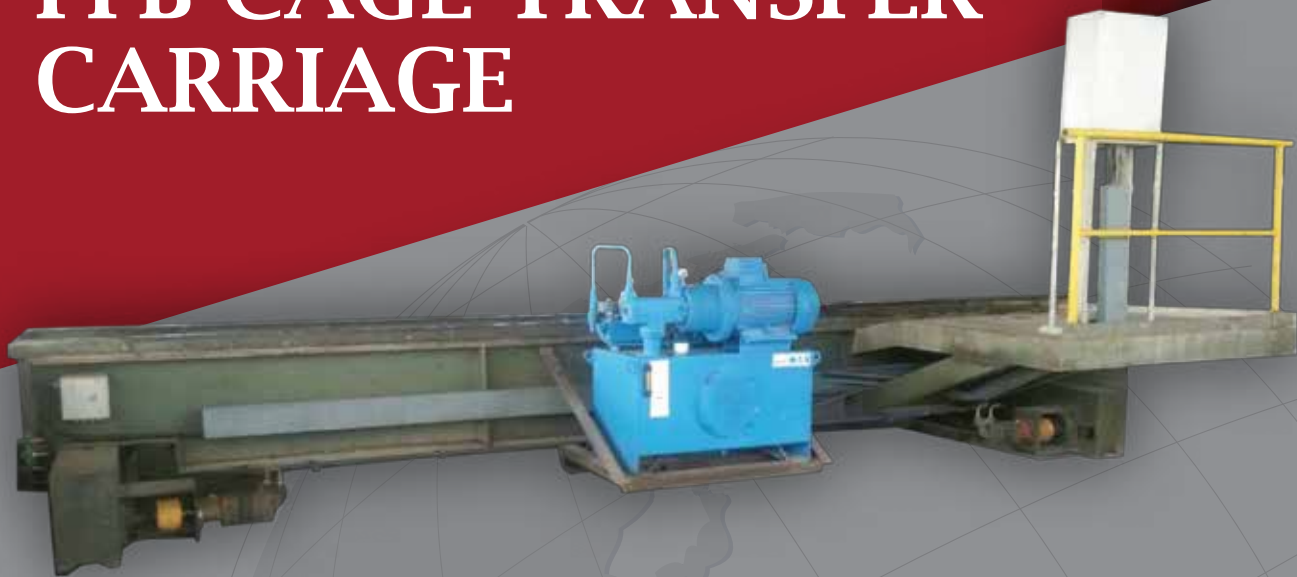


EXCEL FFB CAGE TRANSFER CARRIAGE

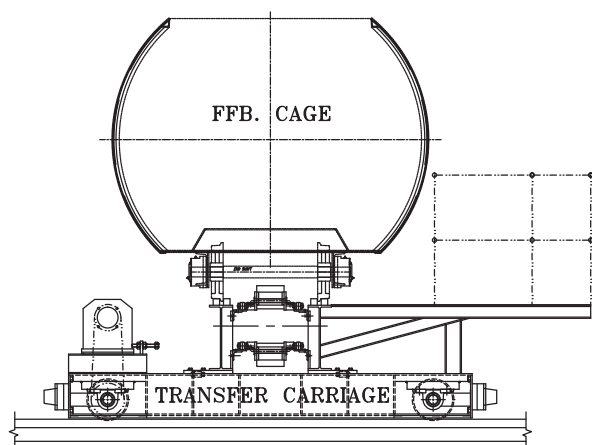


Palm Oil Mill Equipment Specialist

www.excelmech.com.my



FFB CAGE TRANSFER CARRIAGE



FUNCTION

FFB cage transporter to transfer cage from one rail tracks to another.

CONSTRUCTION

- The transporter sits in a pit c/w rail lines.
- Main frame of MS plate, U beam, channel and angle c/w operating platform.
- The car is driven by hydraulic motor.
- FFB cage charge and discharge can be operated with conveyor chain system or indexing system.
- Position locking system is provided during FFB cage charge and discharge.

DESCRIPTION

- | | |
|--------|---|
| Size | : Size of capacity can be ranged from 5 tons to 30 tons, depending on needs. |
| Drive | : Operated with hydraulic motor to control the car movement as well as cage movement. |
| Others | : Easy installation and low maintenance and high safety. Can be automated easily. |

For further information, please contact sales office, or:



Excelmech Engineering Sdn. Bhd. (Company No. 862039-X)

Lot 2828, Jln Kelkati 32/168, Off Jln. Sri Gambut Bukit Naga,
Seksyen 32, 40460 Shah Alam, Selangor Darul Ehsan, Malaysia.
Tel: 603-5167 1589 Fax: 603-5167 2588
E-mail: contact@excelmech.com.my



SCAN ME