

EXCEL THERMAL DEAERATOR



Palm Oil Mill Equipment Specialist

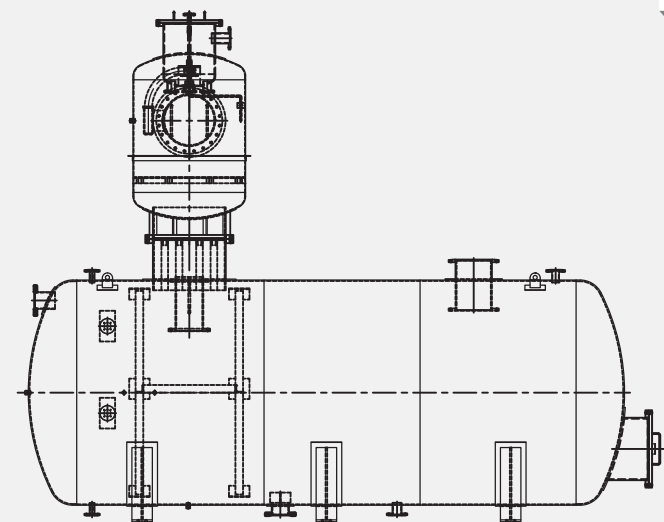
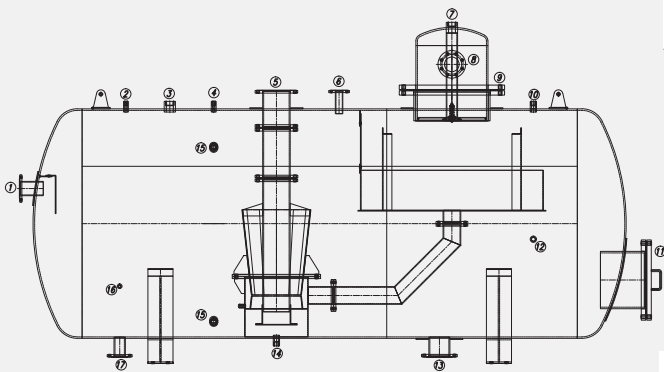
www.excelmech.com.my

THERMAL DEAERATOR

SPECIFICATION

Design Code	: ASME Section VIII Div. 1
Design Pressure	: 350 kPaG
Design Temperature	: 150 °C
Medium of Service	: Hot Water and Steam
Construction Material	: Stainless Steel & Mild Steel
Capacity	: Range from 10 tons/hr to 60 tons/hr

PACKAGE INCLUDES



For further information, please contact sales office, or:



Excelmech Engineering Sdn. Bhd. (Company No. 862039-X)

Lot 2828, Jln Kelkati 32/168, Off Jln. Sri Gambut Bukit Naga,
Seksyen 32, 40460 Shah Alam, Selangor Darul Ehsan, Malaysia.

Tel: 603-5167 1589 Fax: 603-5167 2588

E-mail: contact@excelmech.com.my