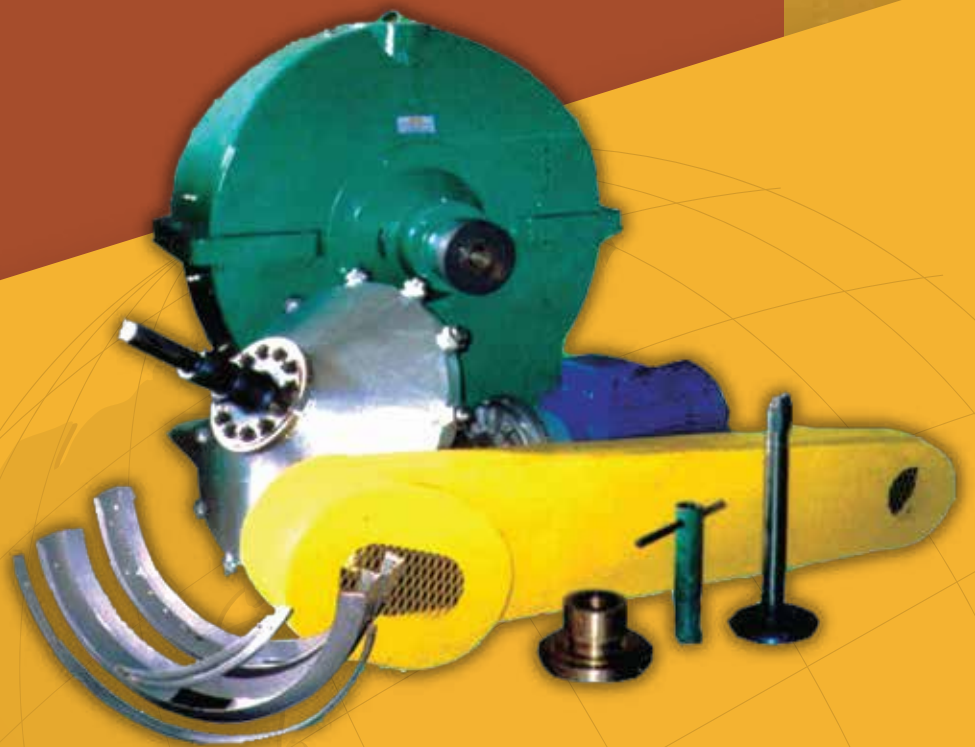


# SLUDGE SEPARATOR



Palm Oil Mill Equipment Specialist

[www.excelmech.com.my](http://www.excelmech.com.my)

# SLUDGE SEPARATOR

## INTRODUCTION

Sludge Centrifuge come with robust design to maximize the process to recover the palm oil present in the sludge water from oil clarification station. This sludge centrifuge physical size is small but the operating capacity is higher. This sludge centrifuge are Dish Bowl type with 12 nozzles. The rotation speed is maintain at 1500 r.p.m with capability of achieving higher capacity of 8000 litres per hour of sludge while maintaining normal oil loss.

## ADVANTAGES

- Increase productivity and efficiency of oil recovery.
- Higher capacity in term of power to space and weight ratio.
- Easy to operate.
- Balancing of the dish bowl by specialist is not required.
- Less vibration and maintenance cost.
- Better shearing effect on sludge resulting in reduction of sludge viscosity.

## SPECIFICATION

Capacity	8000 Litre/Hour
No. of Nozzles	12
Motor	15kW (3 Phase) x 4 Pole F/t Mounted
Fluid Coupling	11 KSD
Rotor Speed	1500 rpm
Transmission	V Belt and Pulley
Bearing	SKF
Rotor Material	6mm Stainless Steel 304L
Nozzle	Tungsten Carbide
Casing/Housing	Cast Iron
Media Parts	Stainless Steel 304L

The **advantage** using dish bowl is that it doesn't required specialist or special equipment to balance it compare to star bowl. Mill personnel can easily calibrate or balanced it without any issue.

For further information, please contact sales office, or:



**Excelmech Engineering Sdn. Bhd.** (Company No. 862039-X)

Lot 2828, Jln Kelkati 32/168, Off Jln. Sri Gambut Bukit Naga,  
Seksyen 32, 40460 Shah Alam, Selangor Darul Ehsan, Malaysia.  
Tel: 603-5167 1589 Fax: 603-5167 2588  
E-mail: [contact@excelmech.com.my](mailto:contact@excelmech.com.my)