

EXCEL THRESHER



Palm Oil Mill Equipment Specialist

www.excelmech.com.my



THRESHER



INTRODUCTION

To detach the fruitlets from the sterilized fruit bunch.

CONSTRUCTION

- 4 columns are provided with MS channel ties.
- Side panel plate using MS plate with openable service door and chute.
- Top operating platform using MS chequer plate, support beam and handrails.
- Shafted Rotating drum are support with 2 units of heavy duty bearings at both ends of the shaft.
- Shaftless rotating drums are support with 4 sets of cast steel roller c/w stopper.
- Drums are using MS plate cut into rings/spider arm (shafted) c/w longitudinal MS flat bar. Lifter provided inside drum to lift up bunches.



DESCRIPTION

- Size : 10 tons, 20 tons, 30 tons, 45 tons, 60 tons
- Drive : Gear head powered by motor with belt and pulley. Final operating drum speed of 22-25 rpm
- Others : Double drum threshing machine can be provided

For further information, please contact sales office, or:



Excelmech Engineering Sdn. Bhd. (Company No. 862039-X)

Lot 2828, Jln Kelkati 32/168, Off Jln. Sri Gambut Bukit Naga, Seksyen 32, 40460 Shah Alam, Selangor Darul Ehsan, Malaysia.
Tel: 603-5167 1589 Fax: 603-5167 2588
E-mail: contact@excelmech.com.my



SCAN ME

EXCEL FFB CAGE TRANSFER CARRIAGE

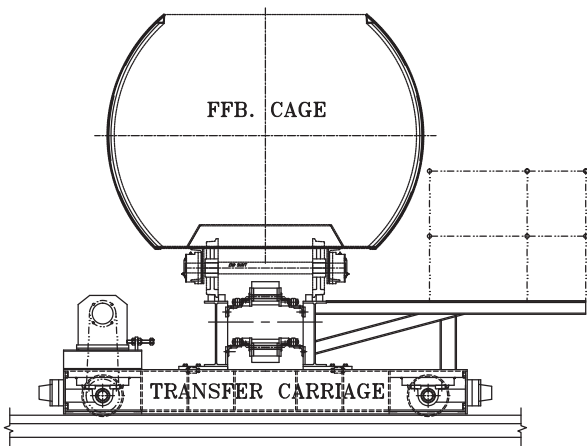


Palm Oil Mill Equipment Specialist

www.excelmech.com.my



FFB CAGE TRANSFER CARRIAGE



FUNCTION

FFB cage transporter to transfer cage from one rail tracks to another.

CONSTRUCTION

- The transporter sits in a pit c/w rail lines.
- Main frame of MS plate, U beam, channel and angle c/w operating platform.
- The car is driven by hydraulic motor.
- FFB cage charge and discharge can be operated with conveyor chain system or indexing system.
- Position locking system is provided during FFB cage charge and discharge.

DESCRIPTION

- Size** : Size of capacity can be ranged from 5 tons to 30 tons, depending on needs.
- Drive** : Operated with hydraulic motor to control the car movement as well as cage movement.
- Others** : Easy installation and low maintenance and high safety. Can be automated easily.

For further information, please contact sales office, or:



Excelmech Engineering Sdn. Bhd. (Company No. 862039-X)

Lot 2828, Jln Kelkati 32/168, Off Jln. Sri Gambut Bukit Naga,
 Seksyen 32, 40460 Shah Alam, Selangor Darul Ehsan, Malaysia.
 Tel: 603-5167 1589 Fax: 603-5167 2588
 E-mail: contact@excelmech.com.my



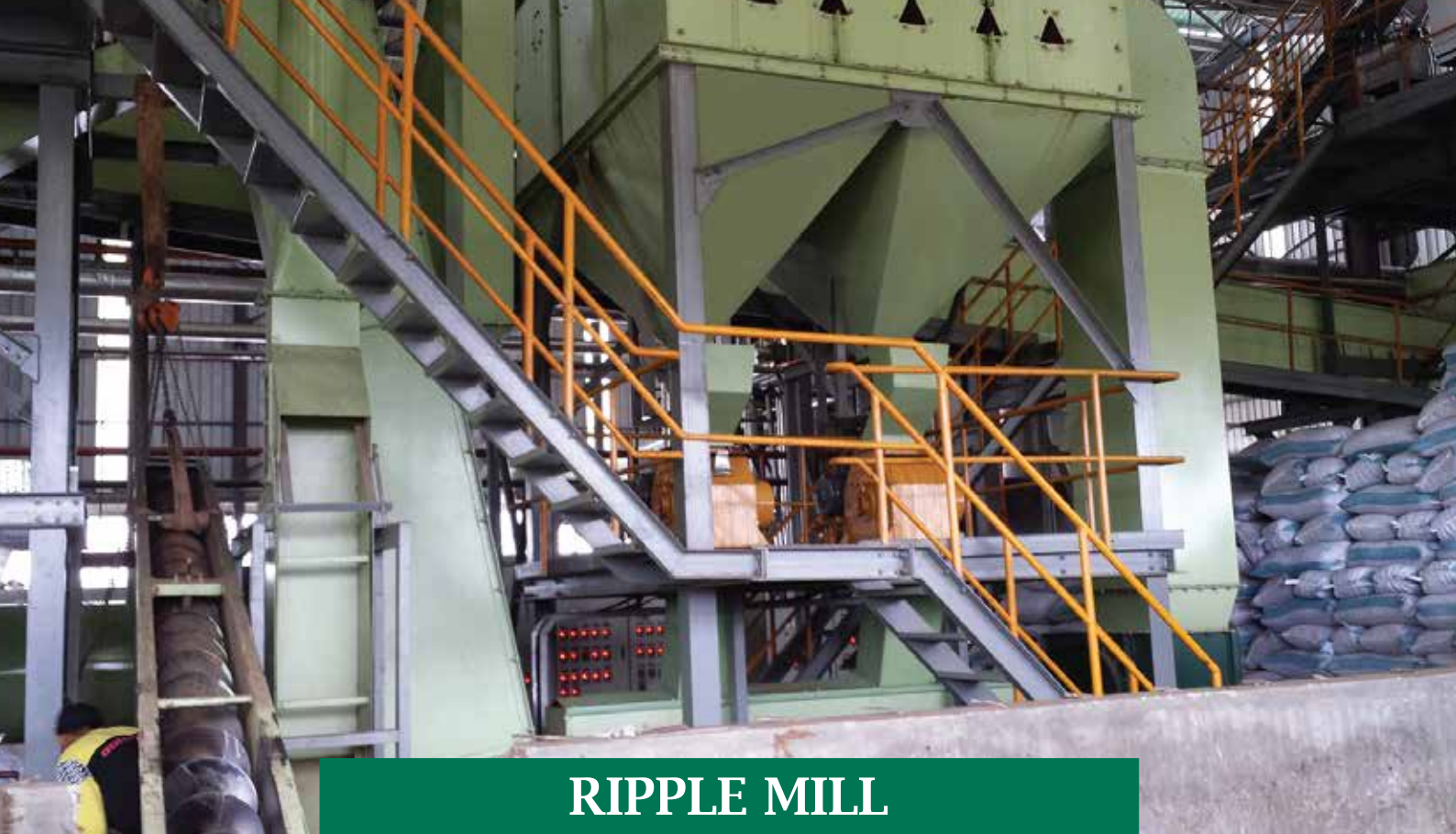
SCAN ME

EXCEL RIPPLE MILL



Palm Oil Mill Equipment Specialist

www.excelmech.com.my



RIPPLE MILL

INTRODUCTION

Ripple Mill has been used for nut cracking in kernel recovery station in palm oil mills for many years. Many palm oil mills using ripple mills has achieved high cracking efficiencies with acceptable broken kernel, minimum maintenance and low maintenance cost. The capacity is 8 Metric Ton.

ADVANTAGES

- High cracking efficiency
- Easy operation and minimum maintenance is required
- Space saving compact design
- Easy installation

ITEM

Rotor Shaft
 Ripple Rod
 Rotor Ring Plate
 Bearing
 Footing Frame
 Motor

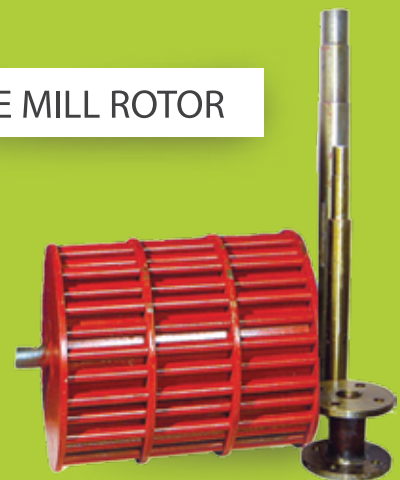
MATERIAL

: S45C c/w Bearing SNH513
 : Polished Shaft c/w Sch 40 pipe
 : Mild Steel
 : Plummer Block Bearing
 : Mild Steel Channel Housing Shell
 : 20 HP x (380 – 440) V x (1,450 / 1,740) rpm,
 (50 / 60) Hz
 : Pulley with SPB V-belt 3 pcs c/w belt guard
 : Cracking Efficiency > 98%,
 Broken Kernel < 10%

RIPPLE MILL



RIPPLE MILL ROTOR



For further information, please contact sales office, or:



Excelmech Engineering Sdn. Bhd. (Company No. 862039-X)

Lot 2828, Jln Kelkati 32/168, Off Jln. Sri Gambut Bukit Naga,
 Seksyen 32, 40460 Shah Alam, Selangor Darul Ehsan, Malaysia.
 Tel: 603-5167 1589 Fax: 603-5167 2588
 E-mail: contact@excelmech.com.my



SCAN ME

EXCEL MOVING FLOOR

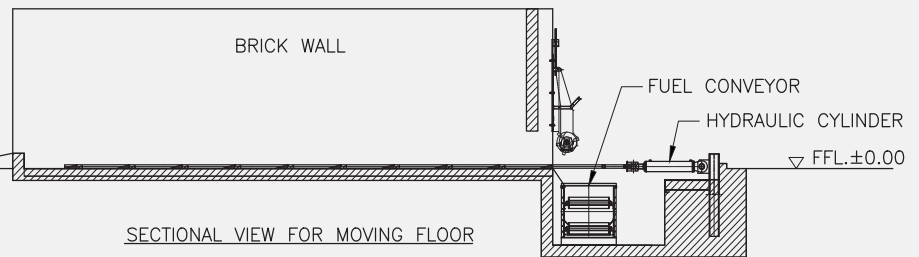


Palm Oil Mill Equipment Specialist

www.excelmech.com.my



MOVING FLOOR



FUNCTION

Provides sufficient storage of biomass fuel like EFB fibre, Palm fibre, Palm shell, wood chips etc. Regulate constant feed of fuel to boiler to maintain boiler pressure without interruption from the inconsistent of fuel from the process.

CONSTRUCTION

- Moving Frame MS Solid Square bar c/w long wedge.
- Cast in situ base frame MS channel c/w stator wedge.
- Moving frame is operated by hydraulic cylinders c/w power pack. Fuel leveler to control the fuel drop into the conveyor system.

DESCRIPTION

- Size** : Size of capacity can be ranged from 10 tons to 30 tons, depending on needs.
- Drive** : Operated with hydraulic system c/w independent cylinder, hydraulic pump and accessories. Direct gearmotor to run the fuel leveler.
- Others** : Easy installation and low maintenance and high safety. Complete fuel management system allows recycling of excess feed to boiler back into the moving storage hopper.

For further information, please contact sales office, or:



Excelmech Engineering Sdn. Bhd. (Company No. 862039-X)

Lot 2828, Jln Kelkati 32/168, Off Jln. Sri Gambut Bukit Naga,
Seksyen 32, 40460 Shah Alam, Selangor Darul Ehsan, Malaysia.
Tel: 603-5167 1589 Fax: 603-5167 2588
E-mail: contact@excelmech.com.my



SCAN ME

EXCEL HYDROCYCLONE

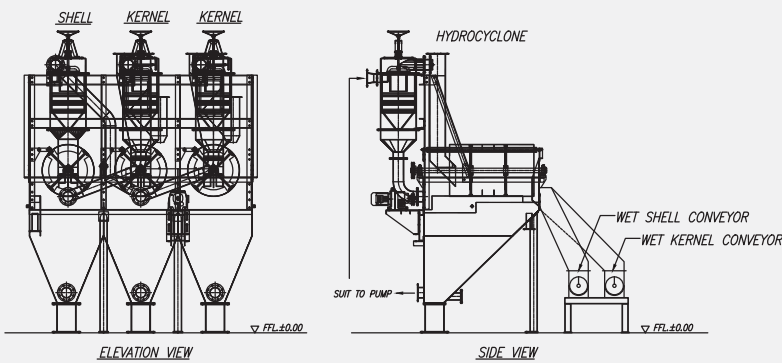


Palm Oil Mill Equipment Specialist

www.excelmech.com.my



HYDROCYCLONE



FUNCTION

To separate the shell and kernels from LTDS crack mixture by pumping water with velocity in cylinders, resulting to separation of kernel surface on top and shell goes under the cone. Vibrating Screens/Drums are used to dewater kernel/shells.

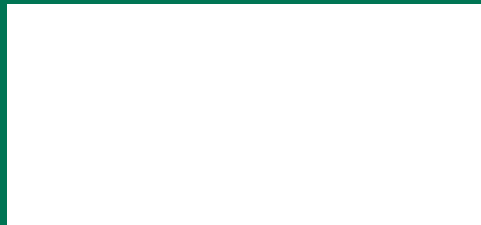
CONSTRUCTION

Water Hopper made of MS or SS304 Cylinder made of MS material, lined with cast iron/chrome steel liner. Bottom cone are Ni-hard to be wear resistance. Dewatering drums/vibrating screen are made of SS304 with perforated holes screen. Pumps are provided with material SS shaft, impeller and casing.

DESCRIPTION

- Size : Size of capacity can be ranged from 5 tons to 30 tons, depending on needs.
- Drive : Rotating drum/vibrating screen with 2.2kw motor @ 16rpm
- Pumps : 80m³-120m³/hr @ 10m head
- Others : Can be custom made to 2 stages or 3 stages

For further information, please contact sales office, or:



Excelmech Engineering Sdn. Bhd. (Company No. 862039-X)

Lot 2828, Jln Kelkati 32/168, Off Jln. Sri Gambut Bukit Naga, Seksyen 32, 40460 Shah Alam, Selangor Darul Ehsan, Malaysia.
 Tel: 603-5167 1589 Fax: 603-5167 2588
 E-mail: contact@excelmech.com.my

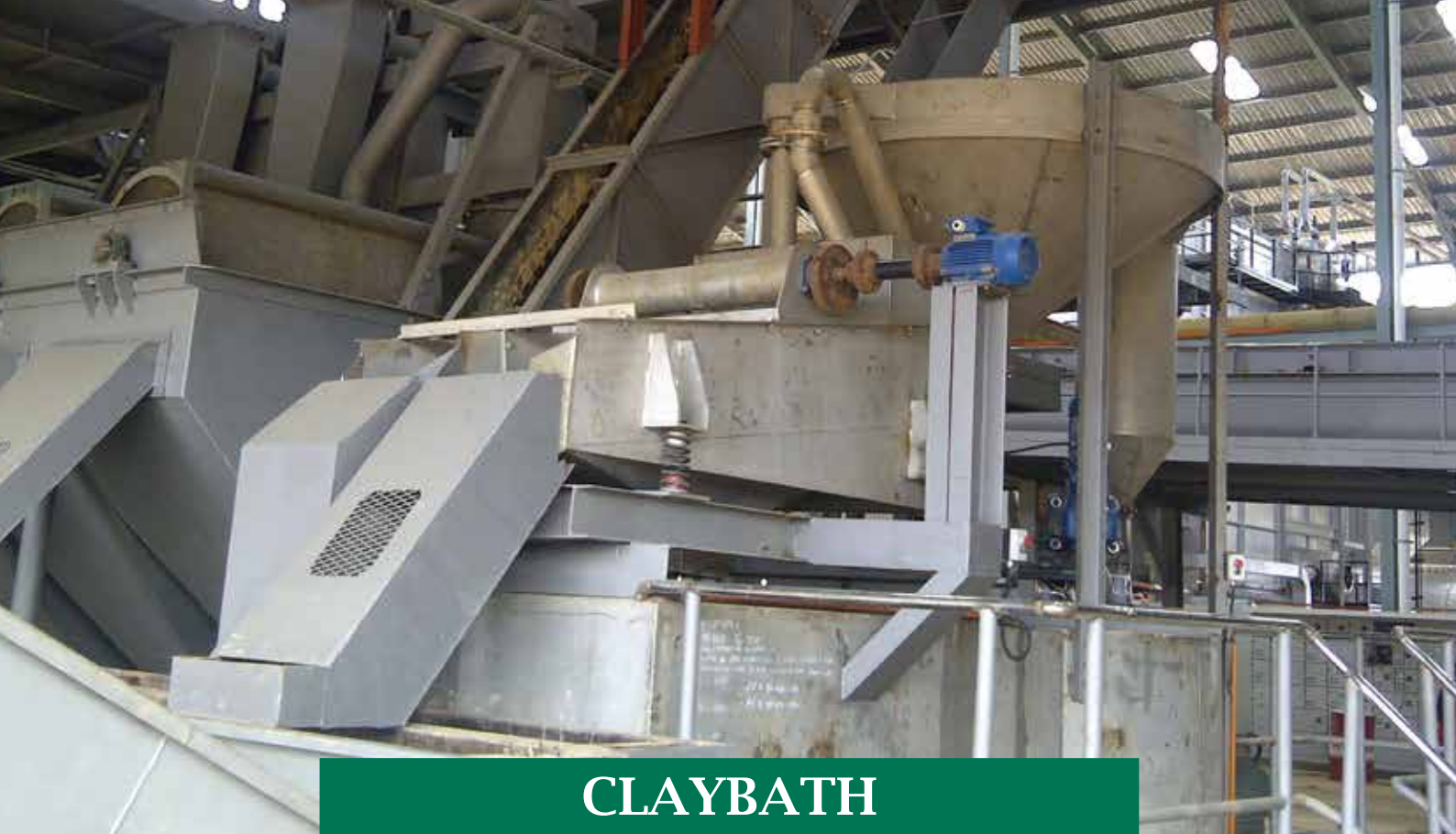


EXCEL CLAYBATH



Palm Oil Mill Equipment Specialist

www.excelmech.com.my



CLAYBATH

FUNCTION

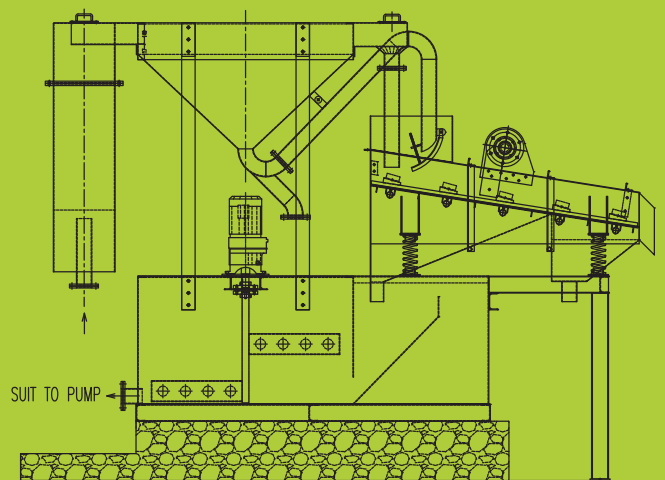
To recover fine and broken kernels from LTDS crack mixture or from the Hydro-cyclone Clay Solution is used to maintain a relative density of Kernel/shell to 1.12. By pumping the clayed crack mixture into the expansion chamber and conical chambers, the circulating force will result to heavier shell being separated from Kernel hydraulically. Separated shell and kernel are dewatered with vibrating screens.

CONSTRUCTION

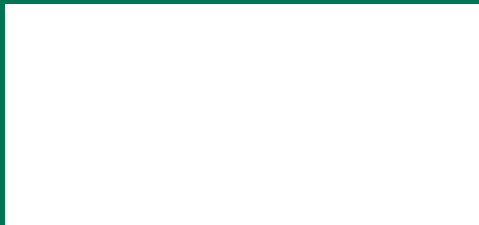
Mixing Tank, Expansion Chamber and Conical Chamber can be made of Mild steel or Stainless Steel. Dewatering Vibrating Screen is made of SS304 with perforated holes screen. Pumps are provided with material SS shaft, impeller and casing.

DESCRIPTION

- Size : 20 tons, 30 tons, 45 tons FFB TPH
- Drive : Double Vibratory Motor with 0.5kw to 1.5kw for Vibrating Screen Vertical stirrer with 20rpm driven by 1.5kw gearmotor
- Pumps : 30m³/hr @ 5m head
- Others : Gauged and fittings, maintenance Platform, staircase and support



For further information, please contact sales office, or:



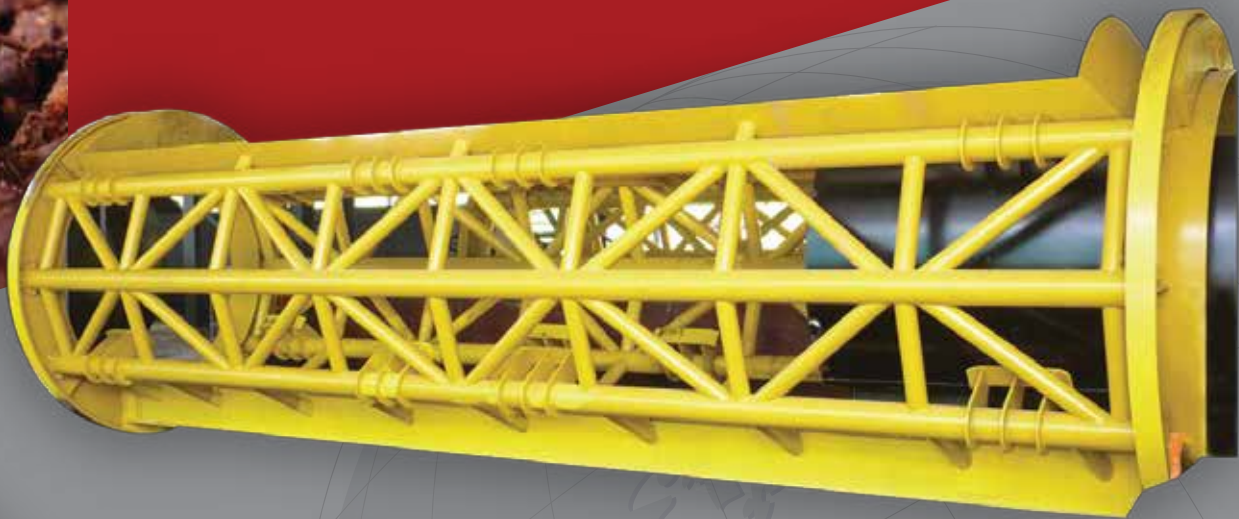
Excelmech Engineering Sdn. Bhd. (Company No. 862039-X)

Lot 2828, Jln Kelkati 32/168, Off Jln. Sri Gambut Bukit Naga,
 Seksyen 32, 40460 Shah Alam, Selangor Darul Ehsan, Malaysia.
 Tel: 603-5167 1589 Fax: 603-5167 2588
 E-mail: contact@excelmech.com.my



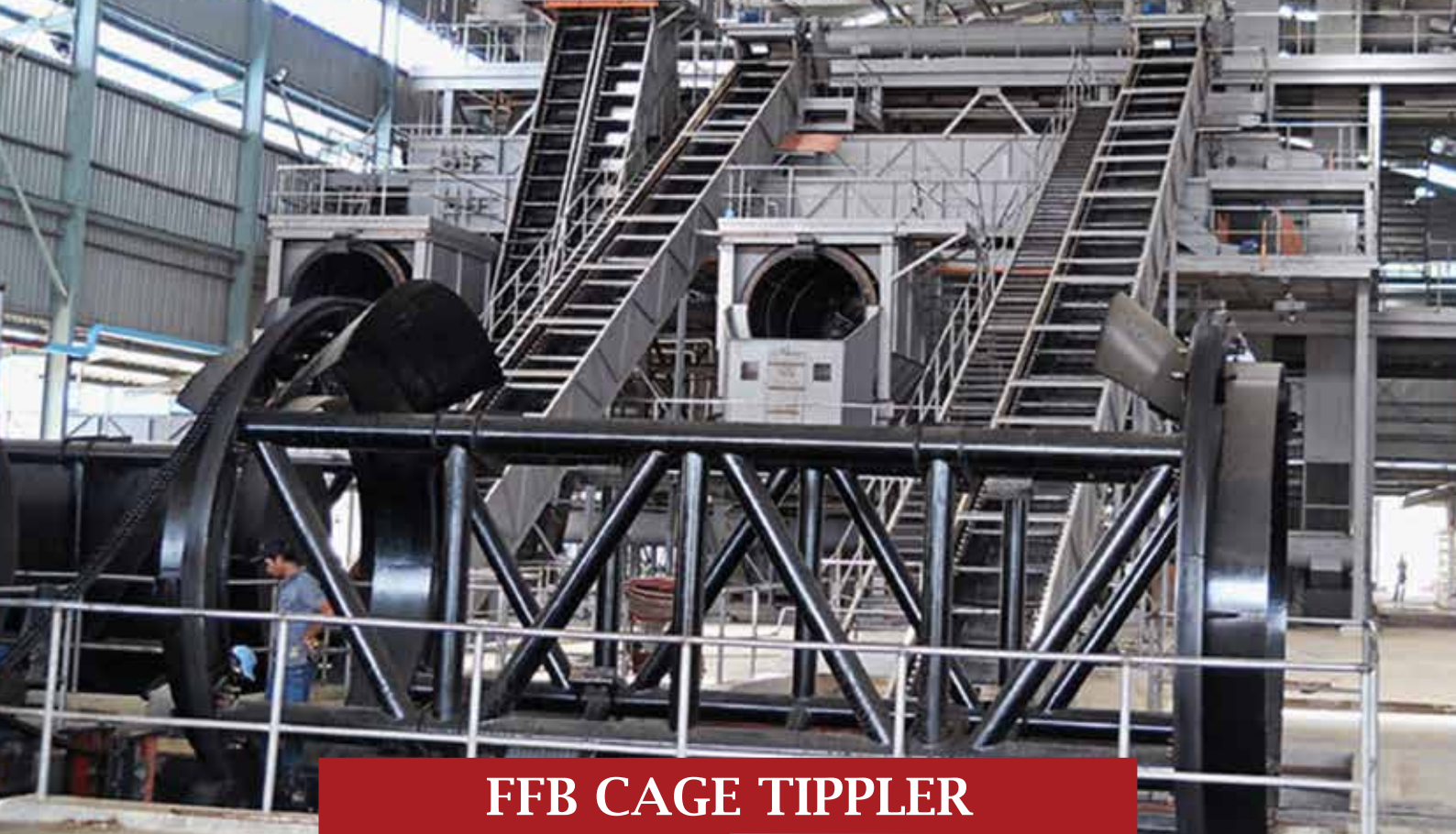
SCAN ME

EXCEL FFB CAGE TIPPLER



Palm Oil Mill Equipment Specialist

www.excelmech.com.my



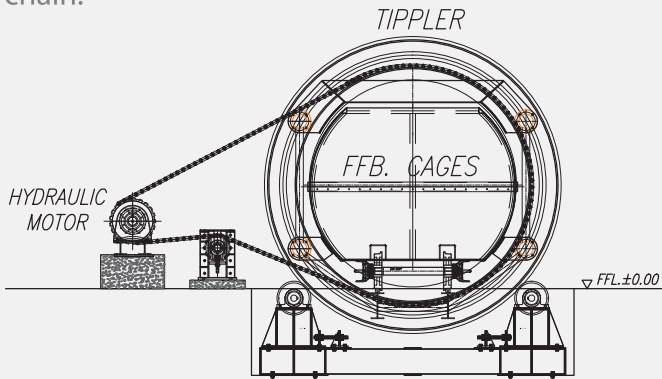
FFB CAGE TIPLER

FUNCTION

Holding Frame to rotate FFB cage to allow SFB to be discharged into bottom hopper. Act as a buffer to control the volume of SFB discharged into bottom hopper.

CONSTRUCTION

2 pieces of rotating Ring made of MS plate c/w machined Square bar ring. The rotating rings are connected with truss MS pipes and I beam. Bottom rail MS I beam, rail bar and chequer plate. Rotation is facilitated with counter weight 4 sets of Cast steel roller c/w stopper roller and base frame for tippler to sit on. The whole drum is connected to hydraulic motor with roller chain.



DESCRIPTION

- Size** : Size of capacity can be ranged from 5 tons to 30 tons, depending on needs.
- Drive** : Operated with hydraulic motor to control the rotation of tippler. Bottom hopper discharge controlled with hydraulic cylinder to regulate the feed into sterilizer fruit bunch conveyor.
- Others** : Easy installation and low maintenance and high safety. Ensure steady feed of SFB into conveyor.



For further information, please contact sales office, or:



Excelmech Engineering Sdn. Bhd. (Company No. 862039-X)

Lot 2828, Jln Kelkati 32/168, Off Jln. Sri Gambut Bukit Naga, Seksyen 32, 40460 Shah Alam, Selangor Darul Ehsan, Malaysia.
Tel: 603-5167 1589 Fax: 603-5167 2588
E-mail: contact@excelmech.com.my



SCAN ME