

EXCEL BACK PRESSURE STEAM RECEIVER

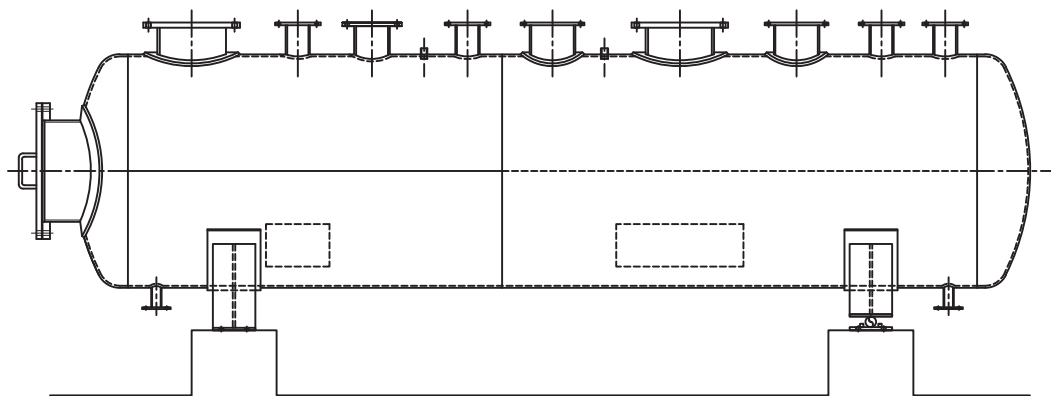
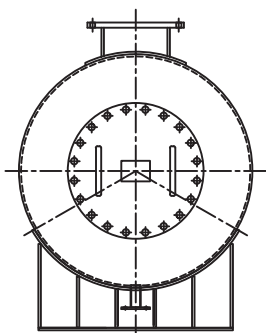


Palm Oil Mill Equipment Specialist

www.excelmech.com.my



BACK PRESSURE STEAM RECEIVER



SPECIFICATION

Back Pressure Steam Receiver is to receive exhaust steam from the Steam Turbine and distributing the steam for mill process and sterilisation.

- Designed and fabricated to ASME code for Unfired Pressure Vessel.
- Mild steel or Boiler Plate for shell and dished end.
- Working pressure: 350 kPa.
- All flanged nozzles to be provided with matching Flanges and bolt and nuts.
- All spare nozzles to be provided with Blind Flanges.
- Heat resistant aluminium painting for external surface.
- Insulated with Rockwool, Aluminium cladding or Stainless Steel cladding.
- Steam inlet flanges to be provided with buffer plates.
- Radiography test and third party certification and inspection when requested.
- Design drawing to be approved by D.O.S.H. Malaysia or third party authority.

For further information, please contact sales office, or:



Excelmech Engineering Sdn. Bhd. (Company No. 862039-X)

Lot 2828, Jln Kelkati 32/168, Off Jln. Sri Gambut Bukit Naga,
Seksyen 32, 40460 Shah Alam, Selangor Darul Ehsan, Malaysia.
Tel: 603-5167 1589 Fax: 603-5167 2588
E-mail: contact@excelmech.com.my



SCAN ME