

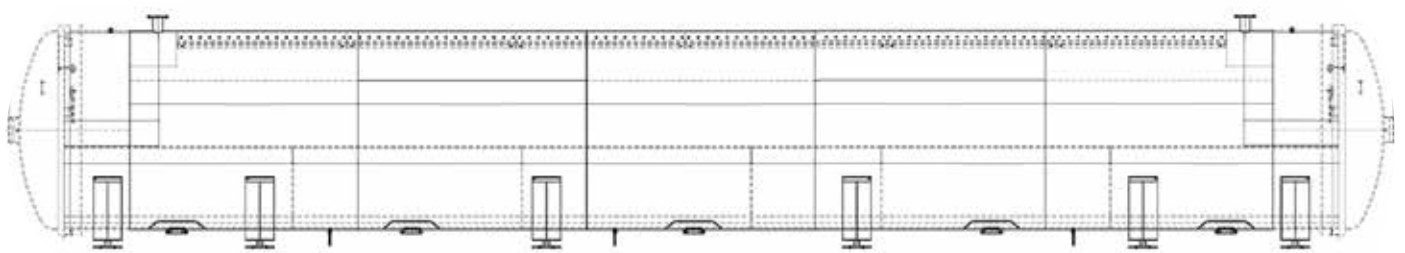
# EXCEL FFB STERILIZER



Palm Oil Mill Equipment Specialist

[www.excelmech.com.my](http://www.excelmech.com.my)





MODEL	EXCEL ST2100	EXCEL ST2700	EXCEL ST3200
Diameter	2,100mm	2,700mm	3,200mm
Shell Material	Boiler Plate SA.516 Gr. 70, Mild Steel SS400 or Stainless Steel 304		
Shell Thickness	12mm - 19mm		
Liner Material	Boiler Plate SA.516 Gr. 70, Mild Steel SS400 or Stainless Steel 304		
Liner Thickness	6mm - 15mm		
Working Pressure	310 - 350 kPa		
Working Temperature	145 - 148 degree C		
Insulation Rockwool	Rockwool 50mm - 75 mm thick		
Insulation Cladding	Aluminium or SS304 0.5mm - 1.0mm thick		
Design Approval	D.O.S.H. / Third Party		

For further information, please contact sales office, or:



**Excelmech Engineering Sdn. Bhd.** (Company No. 862039-X)

Lot 2828, Jln Kelkati 32/168, Off Jln. Sri Gambut Bukit Naga,  
Seksyen 32, 40460 Shah Alam, Selangor Darul Ehsan, Malaysia.  
Tel: 603-5167 1589 Fax: 603-5167 2588  
E-mail: [contact@excelmech.com.my](mailto:contact@excelmech.com.my)



SCAN ME



# EXCEL BACK PRESSURE STEAM RECEIVER



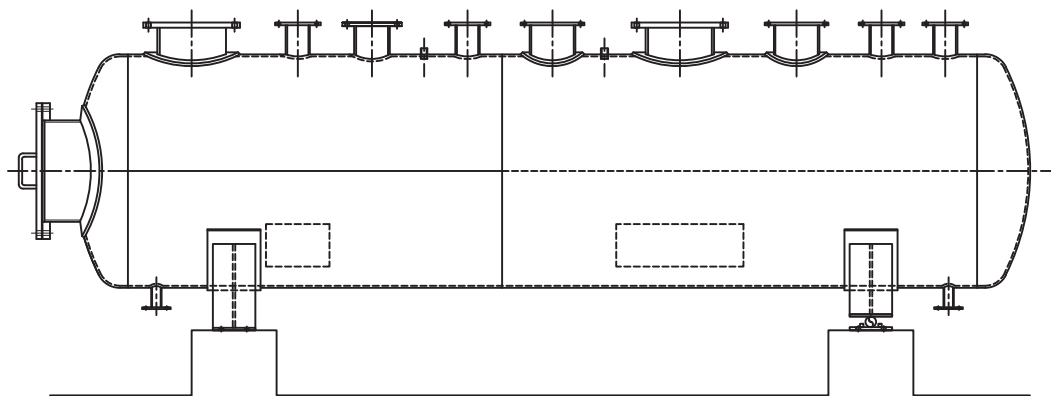
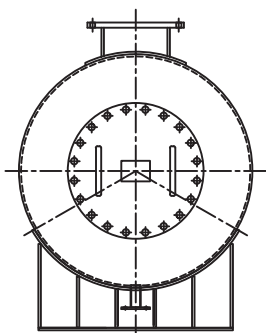
*Palm Oil Mill Equipment Specialist*

[www.excelmech.com.my](http://www.excelmech.com.my)





## BACK PRESSURE STEAM RECEIVER



### SPECIFICATION

**Back Pressure Steam Receiver** is to receive exhaust steam from the Steam Turbine and distributing the steam for mill process and sterilisation.

- Designed and fabricated to ASME code for Unfired Pressure Vessel.
- Mild steel or Boiler Plate for shell and dished end.
- Working pressure: 350 kPa.
- All flanged nozzles to be provided with matching Flanges and bolt and nuts.
- All spare nozzles to be provided with Blind Flanges.
- Heat resistant aluminium painting for external surface.
- Insulated with Rockwool, Aluminium cladding or Stainless Steel cladding.
- Steam inlet flanges to be provided with buffer plates.
- Radiography test and third party certification and inspection when requested.
- Design drawing to be approved by D.O.S.H. Malaysia or third party authority.

For further information, please contact sales office, or:



**Excelmech Engineering Sdn. Bhd.** (Company No. 862039-X)

Lot 2828, Jln Kelkati 32/168, Off Jln. Sri Gambut Bukit Naga,  
Seksyen 32, 40460 Shah Alam, Selangor Darul Ehsan, Malaysia.  
Tel: 603-5167 1589 Fax: 603-5167 2588  
E-mail: [contact@excelmech.com.my](mailto:contact@excelmech.com.my)



SCAN ME



# EXCEL CLUTCH DOOR

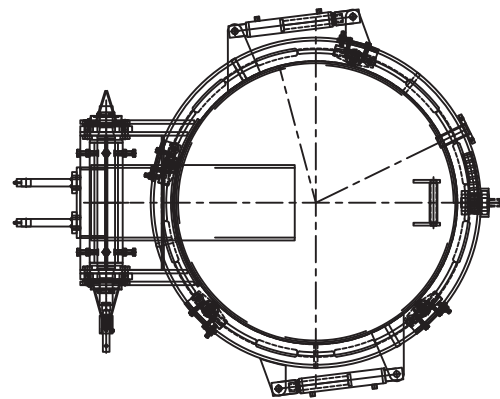
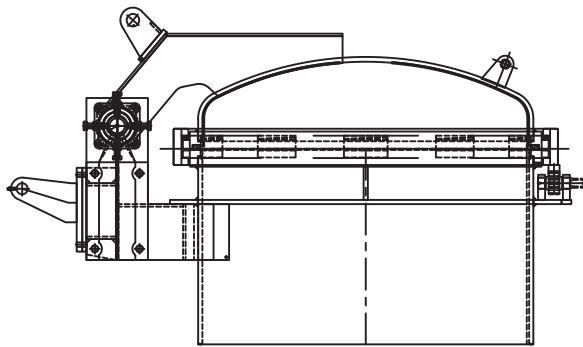


Palm Oil Mill Equipment Specialist

[www.excelmech.com.my](http://www.excelmech.com.my)



## CLUTCH DOOR



### SPECIFICATION

<b>Model</b>	Excel 09, Excel 10, Excel 12, Excel 15, Excel 17 - Excel 32
<b>Diameter (mm)</b>	900, 1,000, 1,200, 1,500, 1,700, 2,100, 2,700, 3,200
<b>Type</b>	Rapid Opening or Closing Rotating Clutch Type
<b>Dished End Material</b>	Boiler Plate SA.516 Gr. 70 / Mild Steel / Stainless Steel
<b>Shell Plate / Neck</b>	Boiler Plate SA.516 Gr. 70 / Mild Steel / Stainless Steel
<b>Dished End Liner</b>	Stainless Steel 304 / Mild Steel
<b>Lock Ring</b>	Boiler Plate SA.516 Gr. 70
<b>Dished / Shell Flanges</b>	Boiler Plate SA.516 Gr. 70
<b>Design Pressure</b>	50 – 200 psig / 350 – 1,380 kPag
<b>Design Approval &amp; HT</b>	D.O.S.H Malaysia / Third Party Authority
<b>Radiography Test</b>	100% on Lock Ring, Dished End Flange and Shell Flange

For further information, please contact sales office, or:



**Excelmech Engineering Sdn. Bhd.** (Company No. 862039-X)

Lot 2828, Jln Kelkati 32/168, Off Jln. Sri Gambut Bukit Naga,  
Seksyen 32, 40460 Shah Alam, Selangor Darul Ehsan, Malaysia.  
Tel: 603-5167 1589 Fax: 603-5167 2588  
E-mail: [contact@excelmech.com.my](mailto:contact@excelmech.com.my)



SCAN ME



# EXCEL STEAM SEPARATOR



*Palm Oil Mill Equipment Specialist*

[www.excelmech.com.my](http://www.excelmech.com.my)

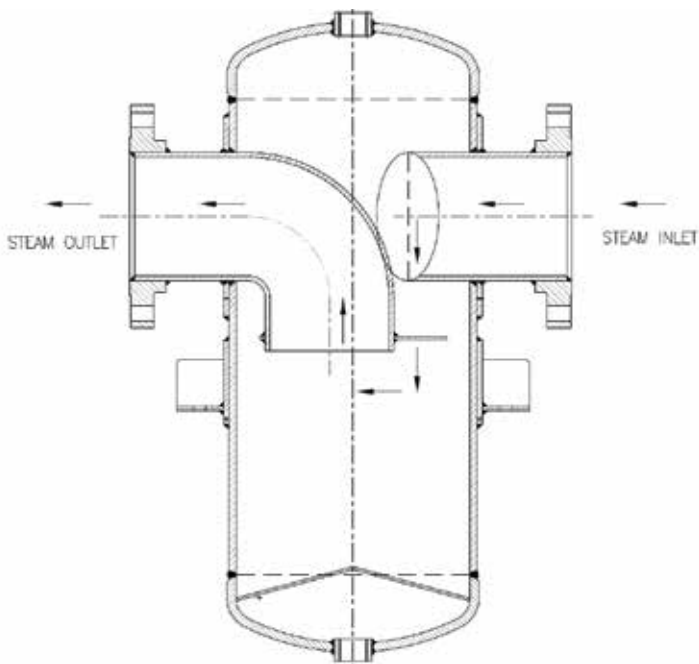


# STEAM SEPARATOR

## MAIN FEATURES

Steam Separator is used to separate water droplets for steam from Boiler to Turbine in Palm Oil Mill.

## SPECIFICATION



- Designed and fabricated to ASME Sect. VIII Div. 1
- DN150 to DN250 for inlet and outlet flanges.
- Boiler Plate SA.516 Gr.70 for shell and dished end.
- Working pressure: 20 to 42 Bar.
- All flanged nozzles to be provided with matching flanges, bolt and nuts.
- Design approval by D.O.S.H. / third party.

For further information, please contact sales office, or:



**Excelmech Engineering Sdn. Bhd.** (Company No. 862039-X)

Lot 2828, Jln Kelkati 32/168, Off Jln. Sri Gambut Bukit Naga,  
Seksyen 32, 40460 Shah Alam, Selangor Darul Ehsan, Malaysia.  
Tel: 603-5167 1589 Fax: 603-5167 2588  
E-mail: [contact@excelmech.com.my](mailto:contact@excelmech.com.my)



SCAN ME