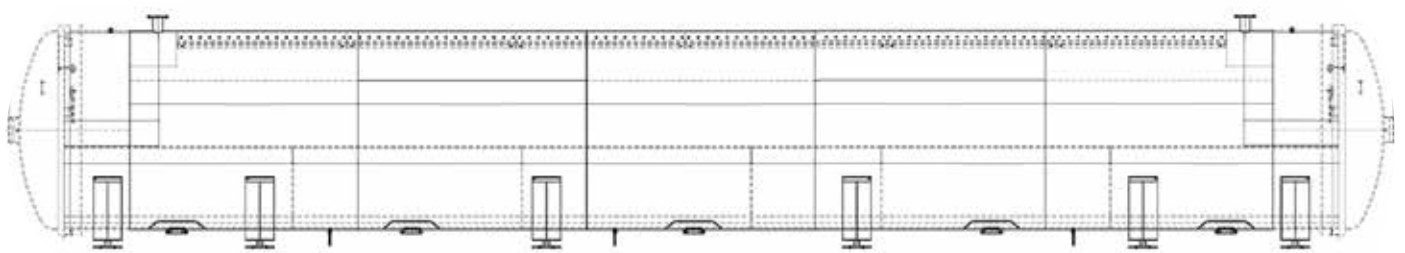


EXCEL FFB STERILIZER



Palm Oil Mill Equipment Specialist

www.excelmech.com.my



MODEL	EXCEL ST2100	EXCEL ST2700	EXCEL ST3200
Diameter	2,100mm	2,700mm	3,200mm
Shell Material	Boiler Plate SA.516 Gr. 70, Mild Steel SS400 or Stainless Steel 304		
Shell Thickness	12mm - 19mm		
Liner Material	Boiler Plate SA.516 Gr. 70, Mild Steel SS400 or Stainless Steel 304		
Liner Thickness	6mm - 15mm		
Working Pressure	310 - 350 kPa		
Working Temperature	145 - 148 degree C		
Insulation Rockwool	Rockwool 50mm - 75 mm thick		
Insulation Cladding	Aluminium or SS304 0.5mm - 1.0mm thick		
Design Approval	D.O.S.H. / Third Party		

For further information, please contact sales office, or:



Excelmech Engineering Sdn. Bhd. (Company No. 862039-X)

Lot 2828, Jln Kelkati 32/168, Off Jln. Sri Gambut Bukit Naga,
Seksyen 32, 40460 Shah Alam, Selangor Darul Ehsan, Malaysia.
Tel: 603-5167 1589 Fax: 603-5167 2588
E-mail: contact@excelmech.com.my



SCAN ME

EXCEL BACK PRESSURE STEAM RECEIVER

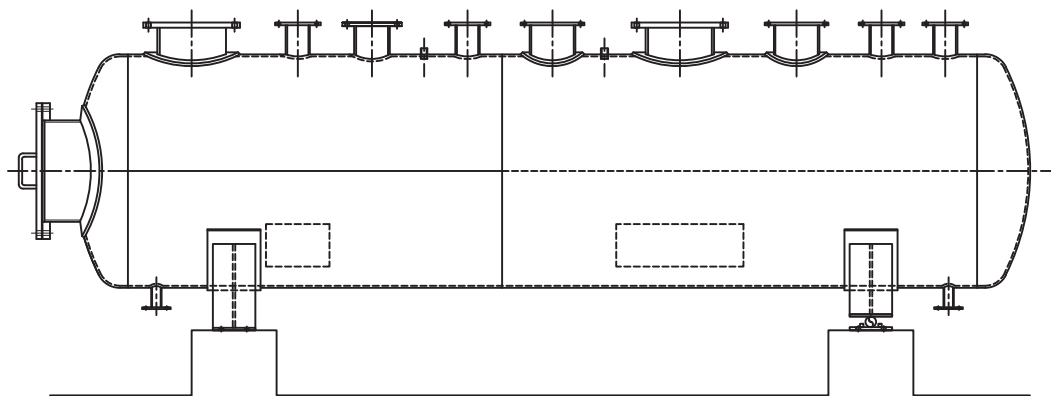
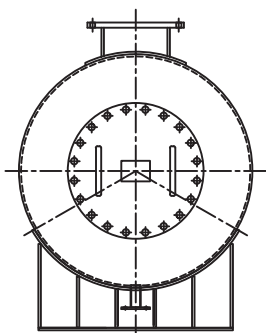


Palm Oil Mill Equipment Specialist

www.excelmech.com.my



BACK PRESSURE STEAM RECEIVER



SPECIFICATION

Back Pressure Steam Receiver is to receive exhaust steam from the Steam Turbine and distributing the steam for mill process and sterilisation.

- Designed and fabricated to ASME code for Unfired Pressure Vessel.
- Mild steel or Boiler Plate for shell and dished end.
- Working pressure: 350 kPa.
- All flanged nozzles to be provided with matching Flanges and bolt and nuts.
- All spare nozzles to be provided with Blind Flanges.
- Heat resistant aluminium painting for external surface.
- Insulated with Rockwool, Aluminium cladding or Stainless Steel cladding.
- Steam inlet flanges to be provided with buffer plates.
- Radiography test and third party certification and inspection when requested.
- Design drawing to be approved by D.O.S.H. Malaysia or third party authority.

For further information, please contact sales office, or:



Excelmech Engineering Sdn. Bhd. (Company No. 862039-X)

Lot 2828, Jln Kelkati 32/168, Off Jln. Sri Gambut Bukit Naga,
Seksyen 32, 40460 Shah Alam, Selangor Darul Ehsan, Malaysia.
Tel: 603-5167 1589 Fax: 603-5167 2588
E-mail: contact@excelmech.com.my



SCAN ME

EXCEL CLUTCH DOOR

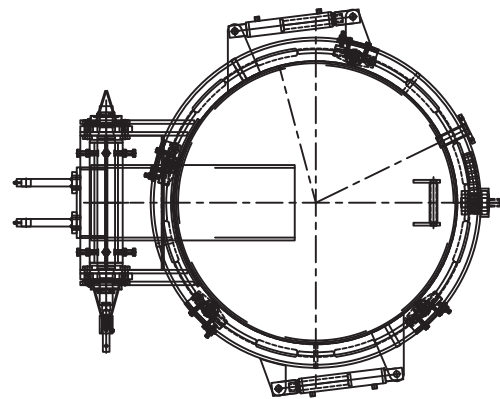
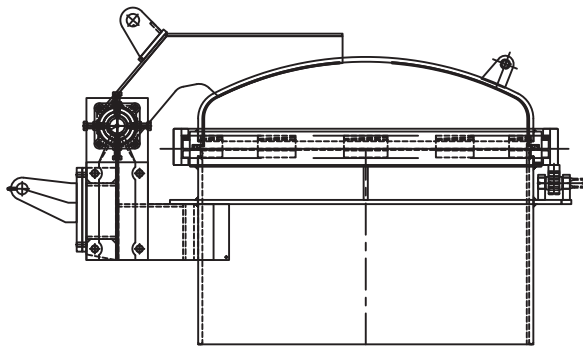


Palm Oil Mill Equipment Specialist

www.excelmech.com.my



CLUTCH DOOR



SPECIFICATION

Model	Excel 09, Excel 10, Excel 12, Excel 15, Excel 17 - Excel 32
Diameter (mm)	900, 1,000, 1,200, 1,500, 1,700, 2,100, 2,700, 3,200
Type	Rapid Opening or Closing Rotating Clutch Type
Dished End Material	Boiler Plate SA.516 Gr. 70 / Mild Steel / Stainless Steel
Shell Plate / Neck	Boiler Plate SA.516 Gr. 70 / Mild Steel / Stainless Steel
Dished End Liner	Stainless Steel 304 / Mild Steel
Lock Ring	Boiler Plate SA.516 Gr. 70
Dished / Shell Flanges	Boiler Plate SA.516 Gr. 70
Design Pressure	50 – 200 psig / 350 – 1,380 kPag
Design Approval & HT	D.O.S.H Malaysia / Third Party Authority
Radiography Test	100% on Lock Ring, Dished End Flange and Shell Flange

For further information, please contact sales office, or:



Excelmech Engineering Sdn. Bhd. (Company No. 862039-X)

Lot 2828, Jln Kelkati 32/168, Off Jln. Sri Gambut Bukit Naga,
Seksyen 32, 40460 Shah Alam, Selangor Darul Ehsan, Malaysia.
Tel: 603-5167 1589 Fax: 603-5167 2588
E-mail: contact@excelmech.com.my



SCAN ME

EXCEL STEAM SEPARATOR



Palm Oil Mill Equipment Specialist

www.excelmech.com.my

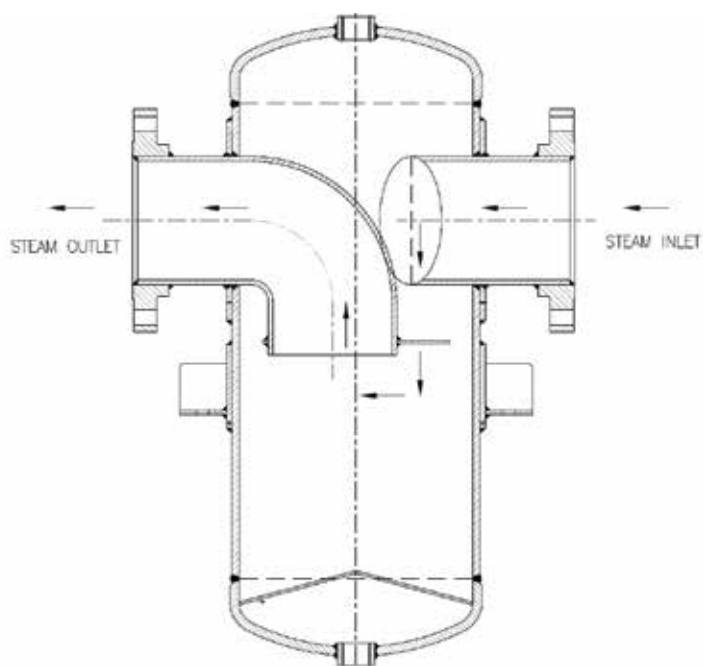


STEAM SEPARATOR

MAIN FEATURES

Steam Separator is used to separate water droplets for steam from Boiler to Turbine in Palm Oil Mill.

SPECIFICATION



- Designed and fabricated to ASME Sect. VIII Div. 1
- DN150 to DN250 for inlet and outlet flanges.
- Boiler Plate SA.516 Gr.70 for shell and dished end.
- Working pressure: 20 to 42 Bar.
- All flanged nozzles to be provided with matching flanges, bolt and nuts.
- Design approval by D.O.S.H. / third party.

For further information, please contact sales office, or:



Excelmech Engineering Sdn. Bhd. (Company No. 862039-X)

Lot 2828, Jln Kelkati 32/168, Off Jln. Sri Gambut Bukit Naga,
Seksyen 32, 40460 Shah Alam, Selangor Darul Ehsan, Malaysia.
Tel: 603-5167 1589 Fax: 603-5167 2588
E-mail: contact@excelmech.com.my



SCAN ME

EXCEL SCREW PRESS

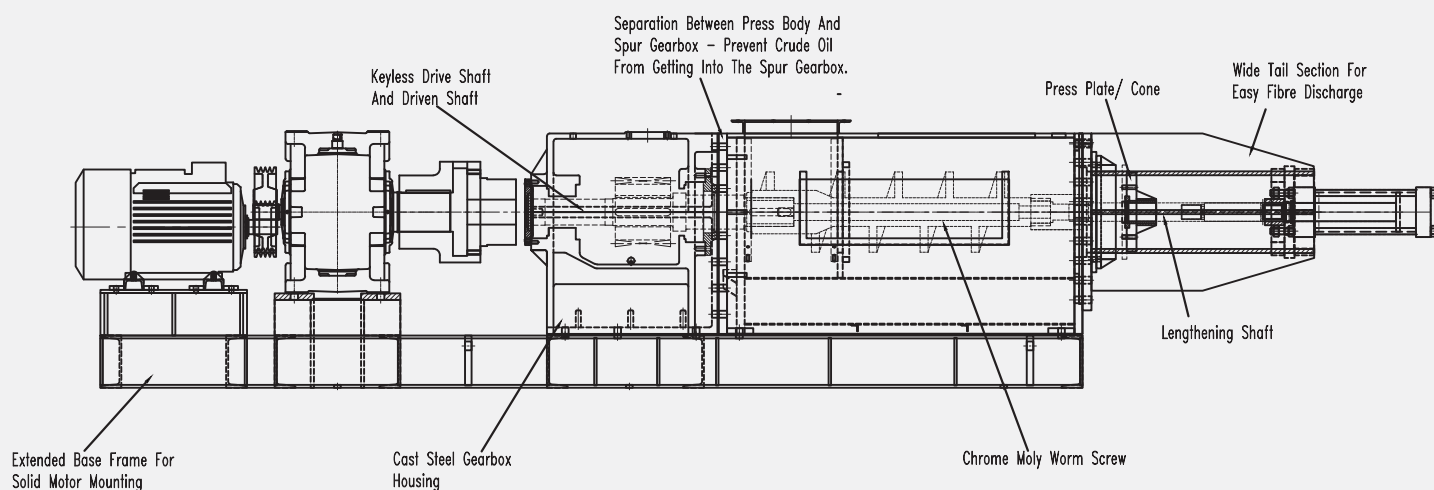


Palm Oil Mill Equipment Specialist

www.excelmech.com.my



SCREW PRESS



MODEL	EXCEL P15	EXCEL P20	EXCEL P25
Type	Double Worm Screw		
Capacity	15-17 tons FFB/hr	20-22 tons FFB/hr	25-27 tons FFB/hr
Motor	30kW (40hp)	45kW (60hp)	45kW (60hp)
Gearbox	Helical Gearbox		
Running Amp	35-50	50-70	50-70
Average Oil Loss (Dry Basis)	6-8%		
Average Nut Breakage	8-11%		
Pressing Plate / Cone Pressure	40-60 bar	50-70 bar	50-70 bar

For further information, please contact sales office, or:



Excelmech Engineering Sdn. Bhd. (Company No. 862039-X)

Lot 2828, Jln Kelkati 32/168, Off Jln. Sri Gambut Bukit Naga,
Seksyen 32, 40460 Shah Alam, Selangor Darul Ehsan, Malaysia.
Tel: 603-5167 1589 Fax: 603-5167 2588
E-mail: contact@excelmech.com.my

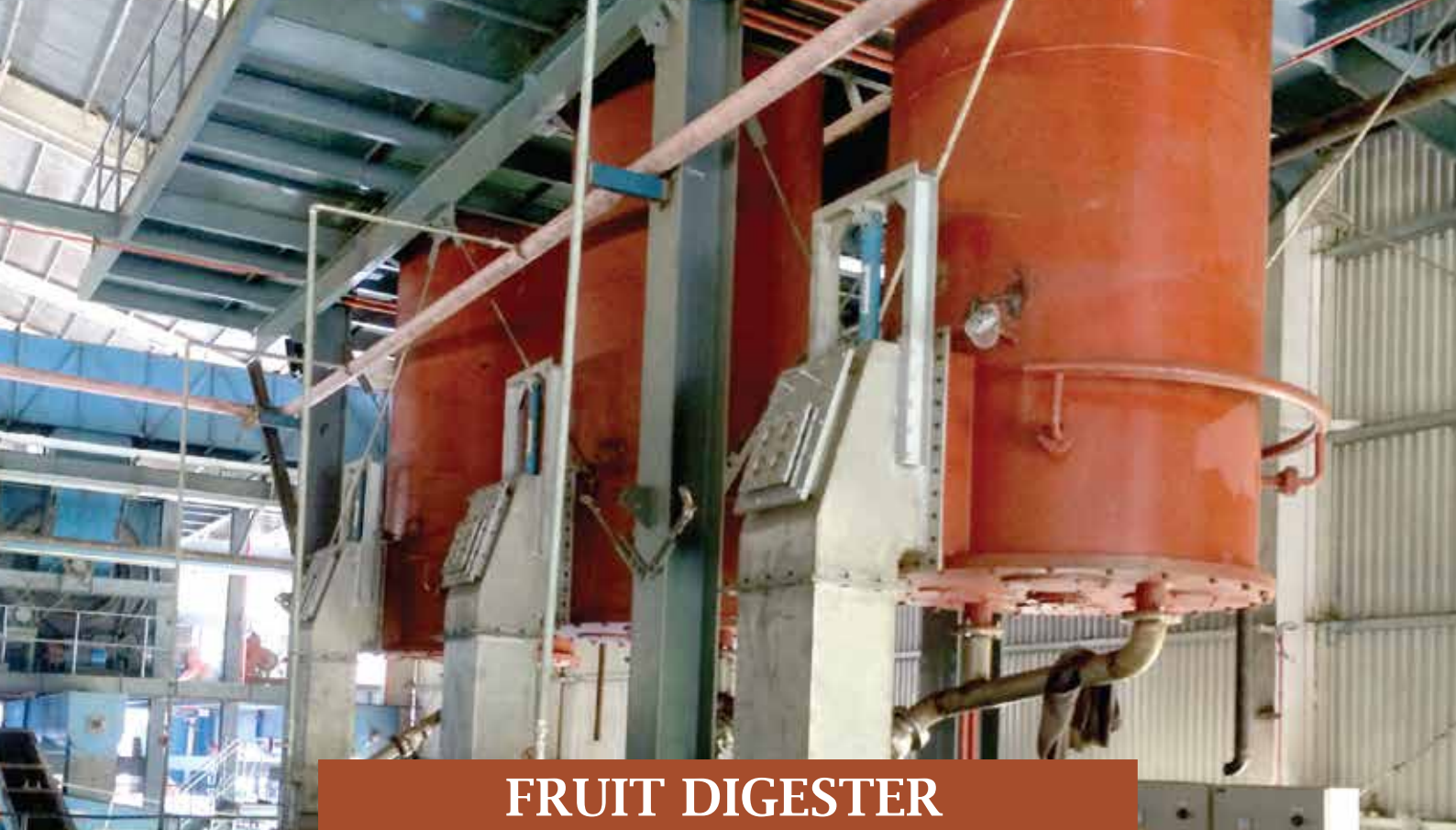


EXCEL FRUIT DIGESTER



Palm Oil Mill Equipment Specialist

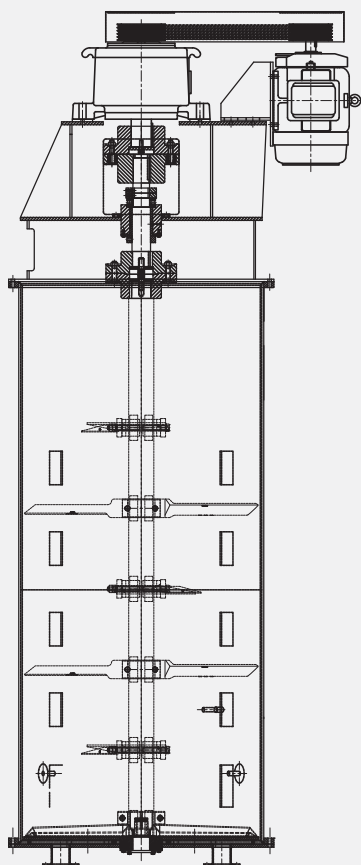
www.excelmech.com.my



FRUIT DIGESTER

Fruit Digester come with intermediate shaft for long operational life of parts, easy alignment and easy maintenance.

1. Capacity: 3,500 litres to 6,500 litres.
2. Perforated stainless steel bottom plate
3. Intermediate connecting shaft for easy installation and maintenance.
4. Thrust bearing provided on intermediate shaft and square shaft.



SHELL & DRIVE



DRIVE

- Electric Motor 30hp to 60hp
- Fluid Coupling
- Speed Reducer: SEW, Flender, Hansen, Elecon.

CONNECTING SHAFT

- Flexible Top Coupling.
- Ball Thrust Bearing 51320.
- Intermediate connecting shaft .
- 110mm to 130mm ASSAB 705/709 material.
- Fixed bottom coupling.

DIGESTER SHELL

- 114 SQ. or 125 SQ. M.S./ASSAB 705 Shaft c/w SS304 lining.
- 4 pairs or 5 pairs beater arms
- 1 pair bottom expeller arms

For further information, please contact sales office, or:



Excelmech Engineering Sdn. Bhd. (Company No. 862039-X)

Lot 2828, Jln Kelkati 32/168, Off Jln. Sri Gambut Bukit Naga,
Seksyen 32, 40460 Shah Alam, Selangor Darul Ehsan, Malaysia.
Tel: 603-5167 1589 Fax: 603-5167 2588
E-mail: contact@excelmech.com.my



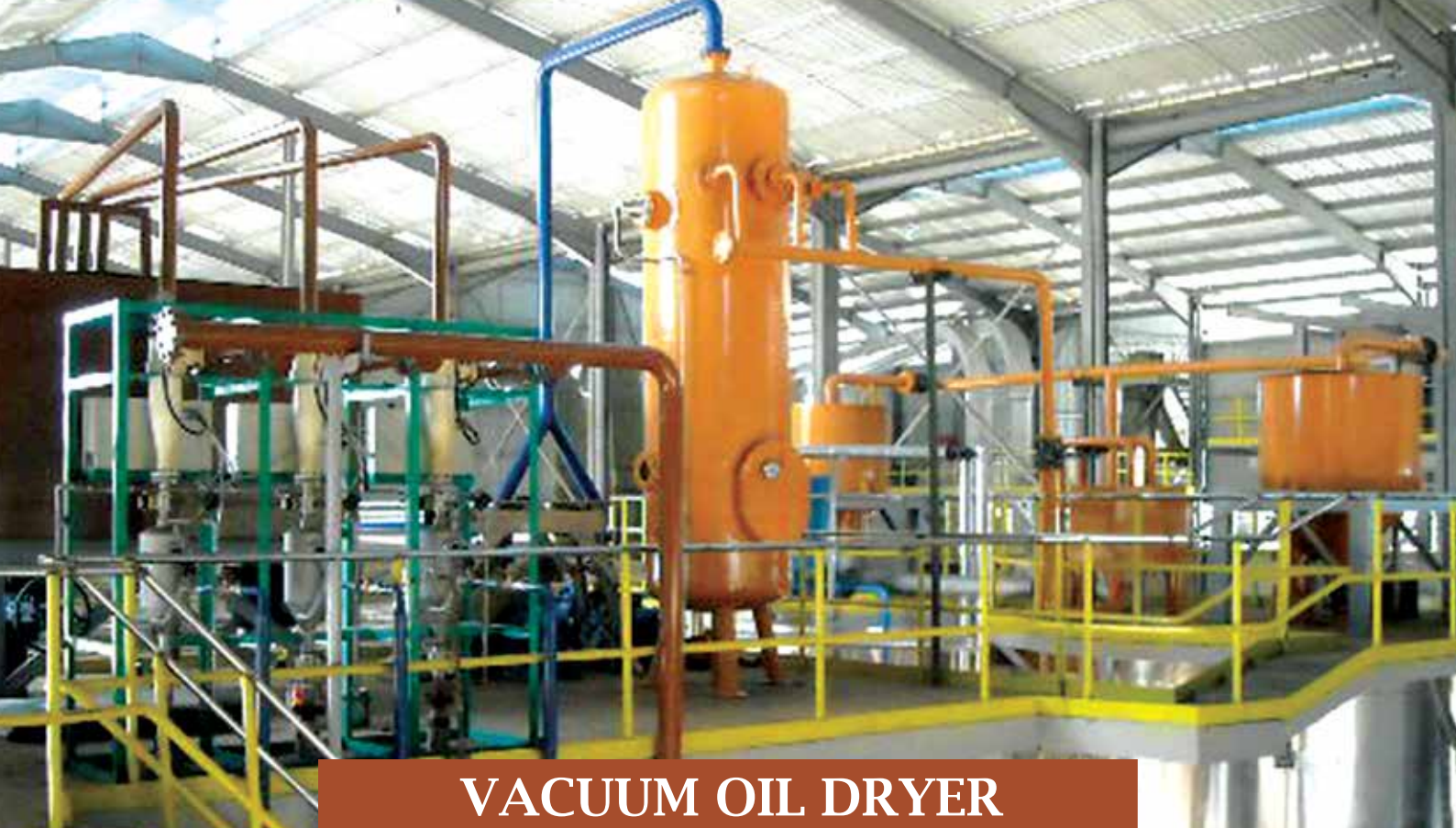
SCAN ME

EXCEL VACUUM OIL DRYER



Palm Oil Mill Equipment Specialist

www.excelmech.com.my

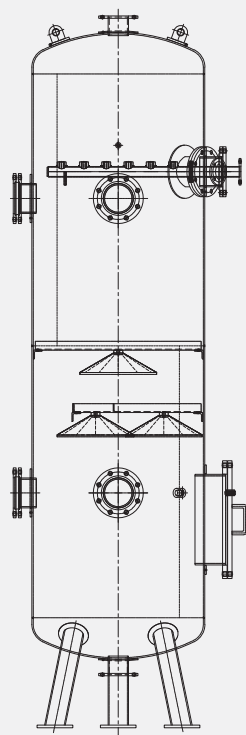
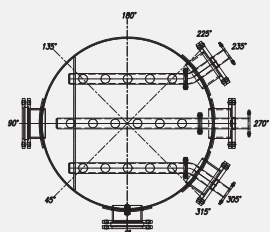


VACUUM OIL DRYER

Vacuum Dryers are used for the drying of palm oil under vacuum before sending it to the CPO storage tank.

MAIN FEATURES

- Capacity range from 5-25 tons/hr.
- Reduce moisture content in dried oil to 0.08%.
- Operation under vacuum at 760mm HG.
- Vessel designed to ASME code Sect. VIII Div.1.
- Material of mild steel and stainless steel or fully stainless steel.



APPLICATIONS (CLARIFICATION STATION)

- The oil to be dried is pumped at a temperature of at least 90°C, to a float tank. From there it is sucked into the Vacuum Dryer via nozzles.
- The oil will leave the nozzles in the form of a spray.
- Any moisture contained in the oil is vaporized and removed from the Vacuum Dryer by the vacuum generating equipment.
- The dried oil collected at the bottom of the Vacuum Dryer is removed by a pump.
- The dried oil pump is prevented from running dry by a float valve fitted inside the Vacuum Dryer or using Mobrey switch.
- The float valve controls the oil level in the re-circulated from the pressure side of the dried oil pump.
- Air is prevented from entering the Vacuum Dryer by a float controlled valve in the feed tank.

For further information, please contact sales office, or:



Excelmech Engineering Sdn. Bhd. (Company No. 862039-X)

Lot 2828, Jln Kelkati 32/168, Off Jln. Sri Gambut Bukit Naga,
Seksyen 32, 40460 Shah Alam, Selangor Darul Ehsan, Malaysia.
Tel: 603-5167 1589 Fax: 603-5167 2588
E-mail: contact@excelmech.com.my



SCAN ME

EXCEL PIG LAUNCHER

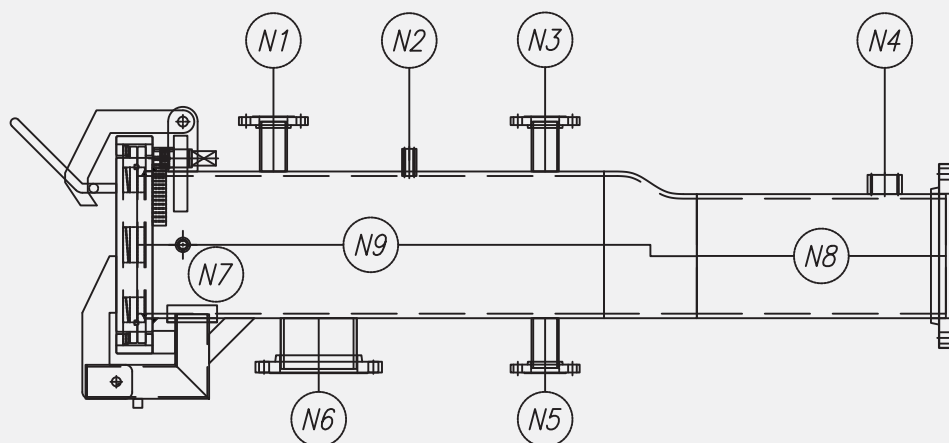


Palm Oil Mill Equipment Specialist

www.excelmech.com.my



PIG LAUNCHER



ACCESSORIES

1. Pig Signaller
2. Cleaning Pig
3. Separation Pig
4. Foam Pig

SPECIFICATION

Design Code : ASME SECT. VIII DIV 1
 Working Pressure : 1,000 - 2,000 kPa
 Design Pressure : 1,000 - 2,000 kPa
 HT Pressure : 1,300 - 2,600 kPa
 Medium of Service : Oil

NO.	SIZE	FUNCTION
N1	50	Air Inlet
N2	15	Pressure Gauge
N3	50	Air Vent
N4	50	Pig Signaller
N5	50	Drain
N6	150	Bypass
N7	15	Relieve valve
N8	250/200	Pipe outlet
N9	300/250	Pipe inlet

For further information, please contact sales office, or:



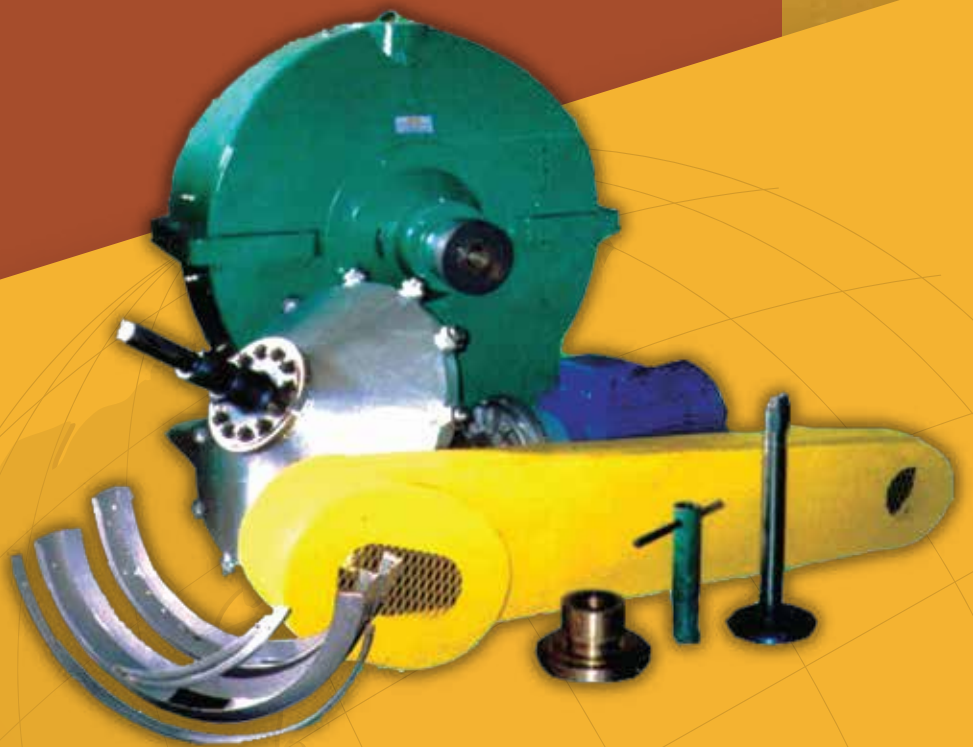
Excelmech Engineering Sdn. Bhd. (Company No. 862039-X)

Lot 2828, Jln Kelkati 32/168, Off Jln. Sri Gambut Bukit Naga,
 Seksyen 32, 40460 Shah Alam, Selangor Darul Ehsan, Malaysia.
 Tel: 603-5167 1589 Fax: 603-5167 2588
 E-mail: contact@excelmech.com.my



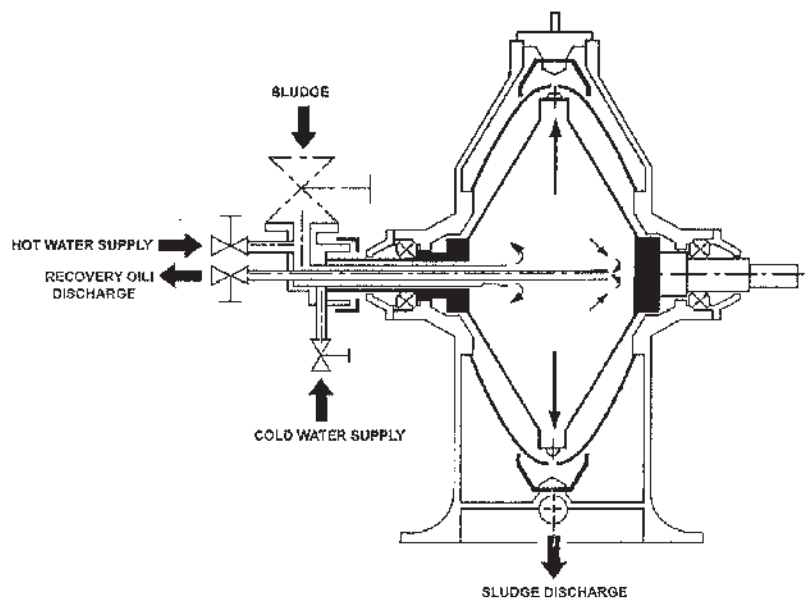
SCAN ME

SLUDGE SEPARATOR



Palm Oil Mill Equipment Specialist

www.excelmech.com.my



SLUDGE SEPARATOR

INTRODUCTION

Sludge Centrifuge come with robust design to maximize the process to recover the palm oil present in the sludge water from oil clarification station. This sludge centrifuge physical size is small but the operating capacity is higher. This sludge centrifuge are Dish Bowl type with 12 nozzles. The rotation speed is maintain at 1500 r.p.m with capability of achieving higher capacity of 8000 litres per hour of sludge while maintaining normal oil loss.

ADVANTAGES

- Increase productivity and efficiency of oil recovery.
- Higher capacity in term of power to space and weight ratio.
- Easy to operate.
- Balancing of the dish bowl by specialist is not required.
- Less vibration and maintenance cost.
- Better shearing effect on sludge resulting in reduction of sludge viscosity.

SPECIFICATION

Capacity	8000 Litre/Hour
No. of Nozzles	12
Motor	15kW (3 Phase) x 4 Pole F/t Mounted
Fluid Coupling	11 KSD
Rotor Speed	1500 rpm
Transmission	V Belt and Pulley
Bearing	SKF
Rotor Material	6mm Stainless Steel 304L
Nozzle	Tungsten Carbide
Casing/Housing	Cast Iron
Media Parts	Stainless Steel 304L

The **advantage** using dish bowl is that it doesn't required specialist or special equipment to balance it compare to star bowl. Mill personnel can easily calibrate or balanced it without any issue.

For further information, please contact sales office, or:



Excelmech Engineering Sdn. Bhd. (Company No. 862039-X)

Lot 2828, Jln Kelkati 32/168, Off Jln. Sri Gambut Bukit Naga,
Seksyen 32, 40460 Shah Alam, Selangor Darul Ehsan, Malaysia.
Tel: 603-5167 1589 Fax: 603-5167 2588
E-mail: contact@excelmech.com.my



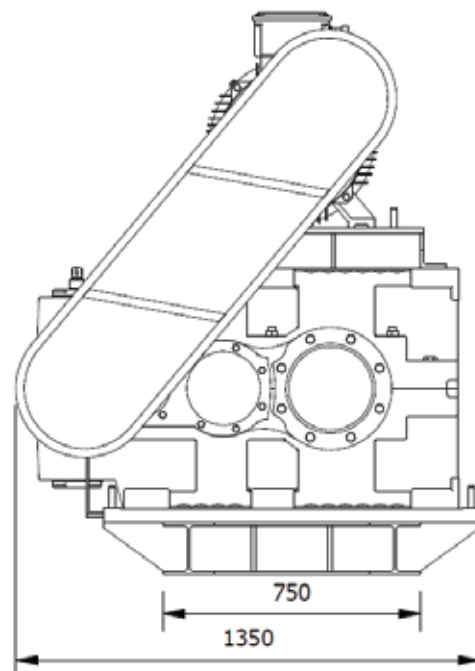
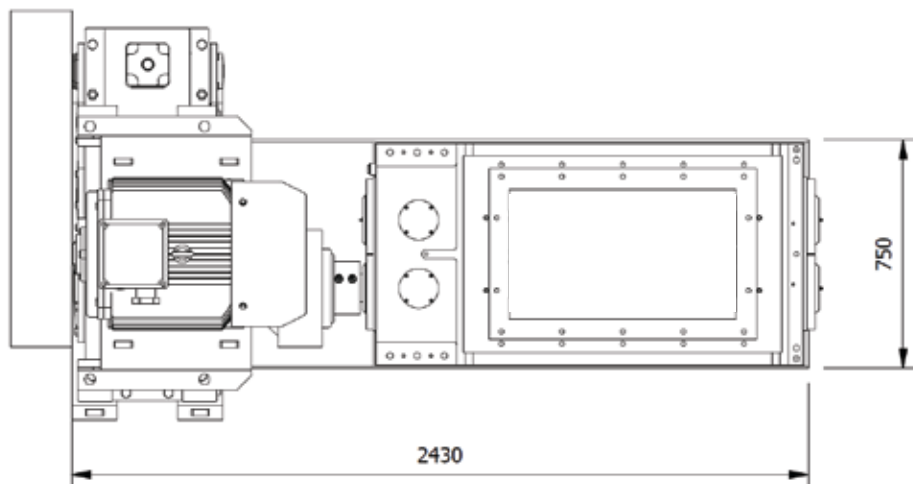
SCAN ME

EXCEL EFB SHREDDER

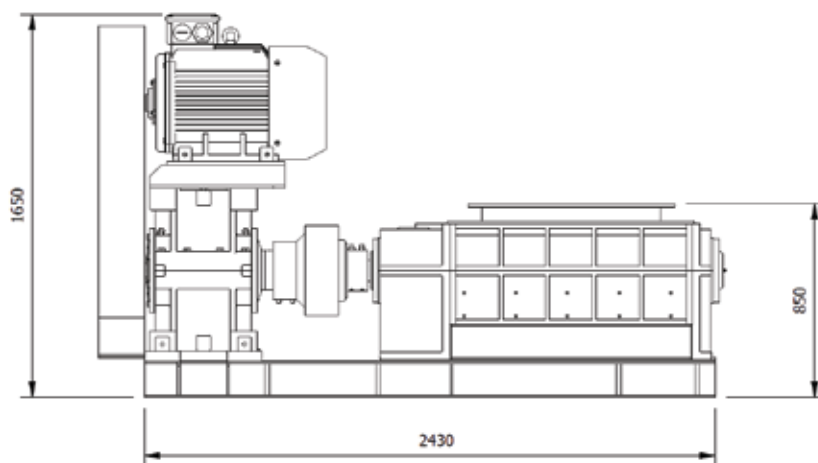


Palm Oil Mill Equipment Specialist

www.excelmech.com.my



EFB SHREDDER



EXCEL EFB SHREDDER

Model	EXCEL EFB SHREDDER 8
Type	Twin Knives
Capacity	7 – 8 Tons EFB/hr
Main Frame	Cast Steel
Base Frame	Mild Steel
EFB Cutter	Hardened Steel Cutter
Shaft	ASSAB 705
Bearing	SKF / FAG
Gearbox	SEW / Sumitomo Paramax
Motor	75 hp x 1,480 rpm
Final Speed	45 rpm
Empty Bunch Fibre Length	50 mm – 125 mm

For further information, please contact sales office, or:



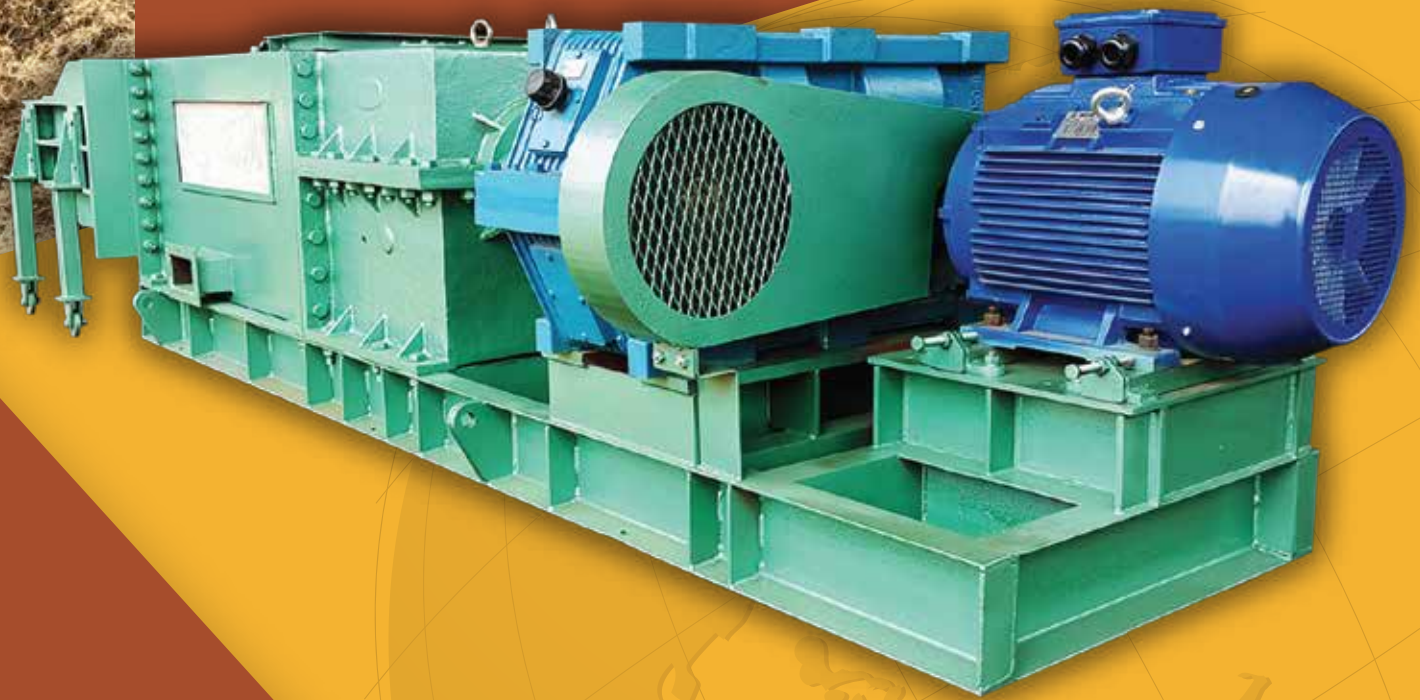
Excelmech Engineering Sdn. Bhd. (Company No. 862039-X)

Lot 2828, Jln Kelkati 32/168, Off Jln. Sri Gambut Bukit Naga,
Seksyen 32, 40460 Shah Alam, Selangor Darul Ehsan, Malaysia.
Tel: 603-5167 1589 Fax: 603-5167 2588
E-mail: contact@excelmech.com.my



SCAN ME

EXCEL EFB PRESS

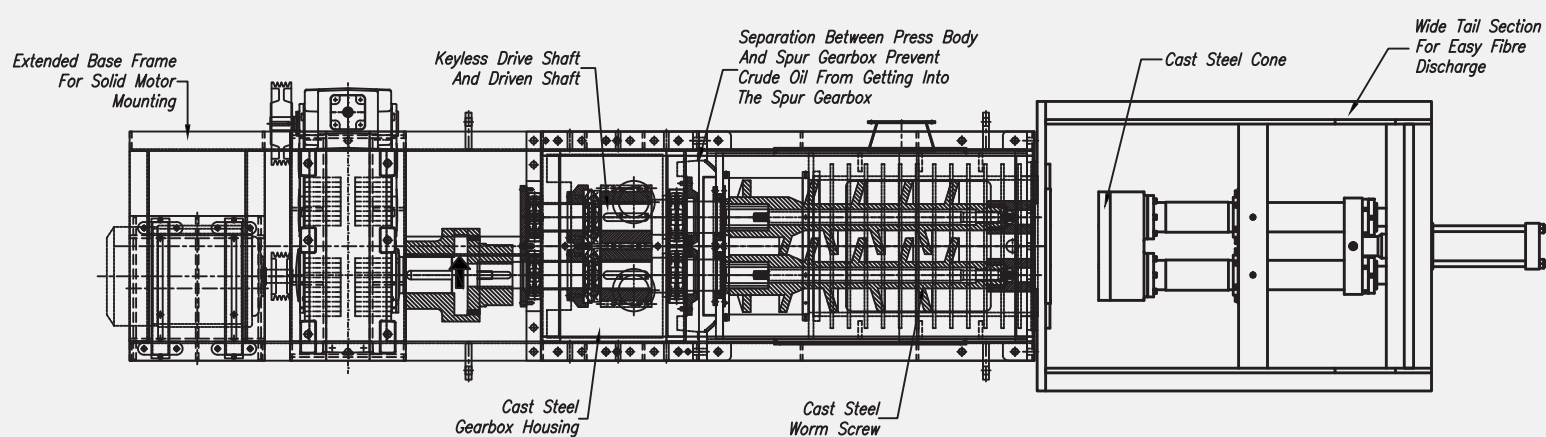


Palm Oil Mill Equipment Specialist

www.excelmech.com.my



EFB PRESS



EXCEL EFB PRESS

Model	EXCEL EFB PRESS 8
Type	Twin Screw
Capacity	7 – 8 Tons EFB/hr
Moisture in EFB	45 – 50 %
Main Frame	Mild Steel & Cast Iron
Base Frame	Mild Steel
EFB Press Screw	Manganese steel screw with hard facing
EFB Press Cage	Mild steel c/w reinforcement rings
Shaft	ASSAB 705
Bearing	SKF / FAG / NTN
Gearbox	SEW / Sumitomo Paramax / Benzler
Motor	60 HP x 1,450 rpm
Final Speed	24 rpm
Oil Extraction Rate	0.1 – 0.2 % FFB

For further information, please contact sales office, or:



Excelmech Engineering Sdn. Bhd. (Company No. 862039-X)

Lot 2828, Jln Kelkati 32/168, Off Jln. Sri Gambut Bukit Naga,
Seksyen 32, 40460 Shah Alam, Selangor Darul Ehsan, Malaysia.
Tel: 603-5167 1589 Fax: 603-5167 2588
E-mail: contact@excelmech.com.my



EXCEL FFB CRUSHER



Palm Oil Mill Equipment Specialist

www.excelmech.com.my



FFB CRUSHER

INTRODUCTION

FFB Crusher is used to crush the FFB hard bunches to ease steam penetration during the sterilization process.

It is proven to decrease the percentage of uncooked bunches and helps to increase the efficiency of sterilization process.

SPECIFICATIONS

MODEL	EXCEL FFB CRUSHER
TYPE	SINGLE DRIVE
CAPACITY	45 TONS FFB/HR
MOTOR	37 KW
GEARBOX	SEW MC3PLSF04
FINAL SPEED	32 RPM & 21 RPM
BEARING	UCF BEARING, UCFCX20D1
TRANSMISSION	PULLEY AND BELT
MAIN FRAME	MILD STEEL
BASE FRAME	MILD STEEL



For further information, please contact sales office, or:



Excelmech Engineering Sdn. Bhd. (Company No. 862039-X)

Lot 2828, Jln Kelkati 32/168, Off Jln. Sri Gambut Bukit Naga,
Seksyen 32, 40460 Shah Alam, Selangor Darul Ehsan, Malaysia.
Tel: 603-5167 1589 Fax: 603-5167 2588
E-mail: contact@excelmech.com.my



Scan me

EXCEL EFB CRUSHER



Palm Oil Mill Equipment Specialist

www.excelmech.com.my



EFB CRUSHER

INTRODUCTION

EFB Crusher is used to crush the unstripped hard bunches to loosen the bunches thus ease the separation of the fruits from the bunches during the threshing process.

SPECIFICATIONS

MODEL	EXCEL EFB CRUSHER 50T
TYPE	SINGLE DRIVE
CAPACITY	10 TONS EFB/HR
MOTOR	15 kW
GEARBOX	PREMIUM WORM GEARBOX U800
FINAL SPEED	35 RPM & 25 RPM
TRANSMISSION	PULLEY AND BELT
MAIN FRAME	MILD STEEL
BASE FRAME	MILD STEEL

MODEL	EXCEL EFB CRUSHER 60T
TYPE	SINGLE DRIVE
CAPACITY	12 TONS EFB/HR
GEARMOTOR	APEX GEARMOTOR 22 KW
FINAL SPEED	35 RPM & 25 RPM
TRANSMISSION	GEARMOTOR TYPE
MAIN FRAME	MILD STEEL
BASE FRAME	MILD STEEL



For further information, please contact sales office, or:



Excelmech Engineering Sdn. Bhd. (Company No. 862039-X)

Lot 2828, Jln Kelkati 32/168, Off Jln. Sri Gambut Bukit Naga,
Seksyen 32, 40460 Shah Alam, Selangor Darul Ehsan, Malaysia.
Tel: 603-5167 1589 Fax: 603-5167 2588
E-mail: contact@excelmech.com.my



Scan me

EXCEL PRESSURE SAND FILTER



Palm Oil Mill Equipment Specialist

www.excelmech.com.my

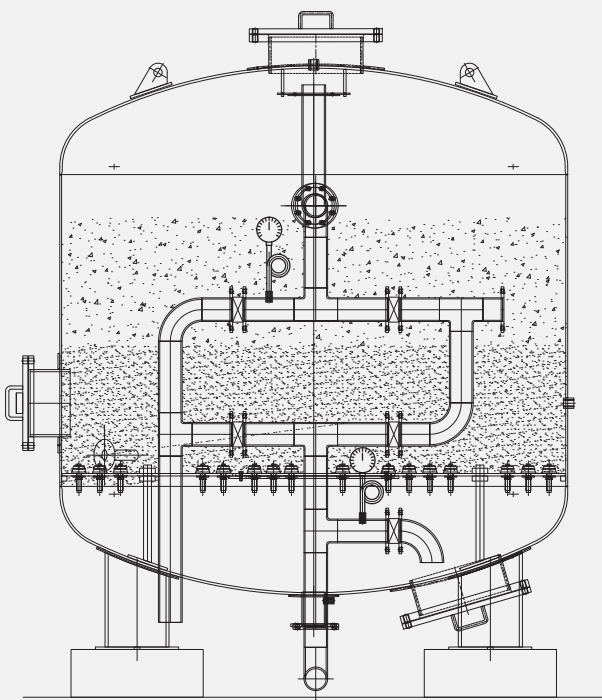


PRESSURE SAND FILTER

MAIN FEATURES

Pressure Sand filters are used for water purification at water treatment plant in Palm Oil Mill and also for others industry.

SPECIFICATION



- Designed and fabricated to ASME code for Unfired Pressure Vessel.
- Mild Steel or Stainless Steel for shell and dished end.
- Complete with frontal piping and butterfly valves, filter nozzles, multi media sand and gravel.
- Internal surface to be sand blasted to SA2 ½ and painted with 2 coats Epoxy food grade paint.
- Working pressure: 350 kPa to 500 kPa.
- All flanged nozzles to be provided with matching flanges and bolt and nuts.
- Design drawing to be approved by D.O.S.H. Malaysia.
- Well design bottom distribution system c/w quality PP nozzles ensures uniform distribution flow of water through.

For further information, please contact sales office, or:



Excelmech Engineering Sdn. Bhd. (Company No. 862039-X)

Lot 2828, Jln Kelkati 32/168, Off Jln. Sri Gambut Bukit Naga,
Seksyen 32, 40460 Shah Alam, Selangor Darul Ehsan, Malaysia.
Tel: 603-5167 1589 Fax: 603-5167 2588
E-mail: contact@excelmech.com.my



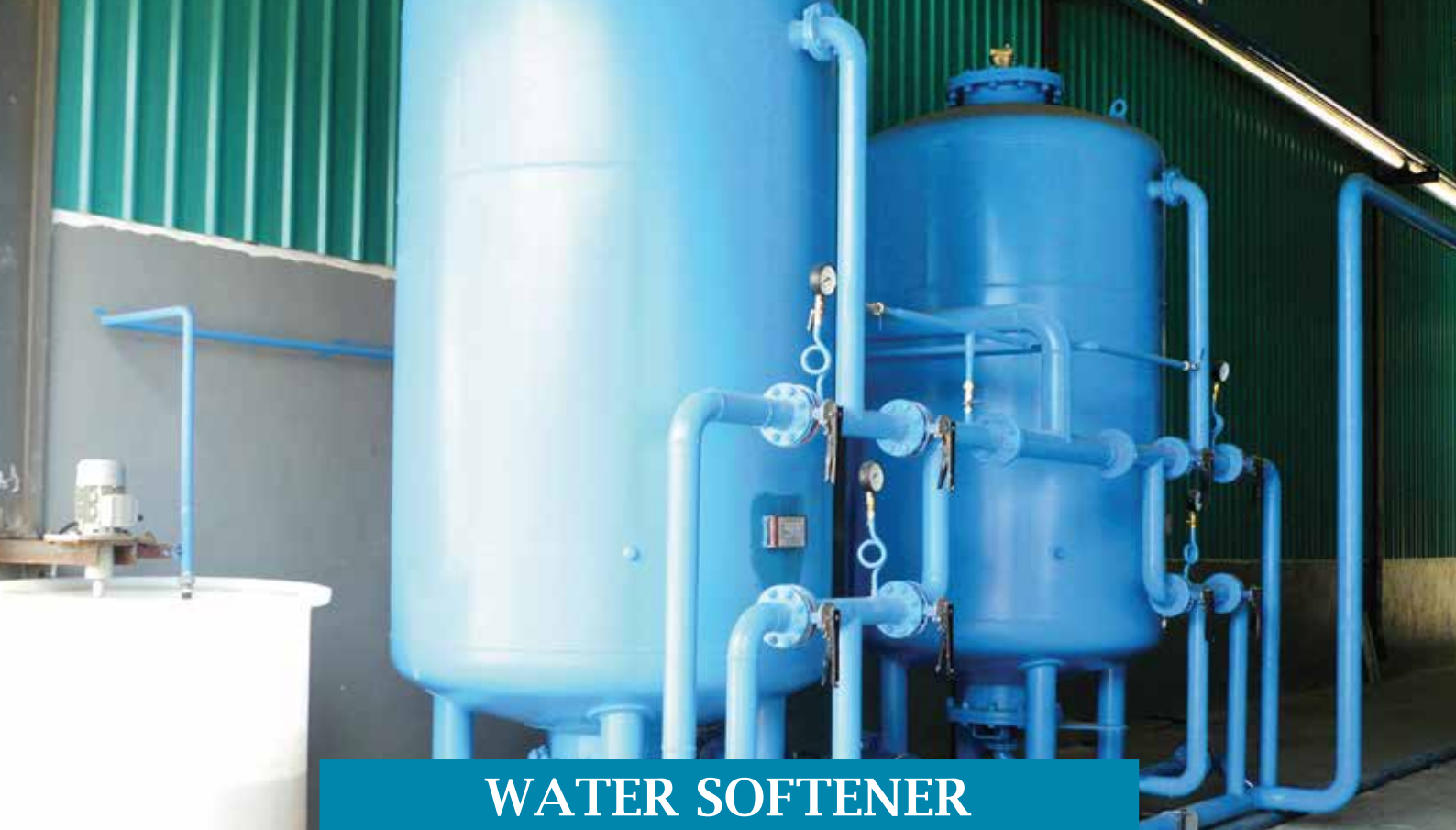
SCAN ME

EXCEL WATER SOFTENER



Palm Oil Mill Equipment Specialist

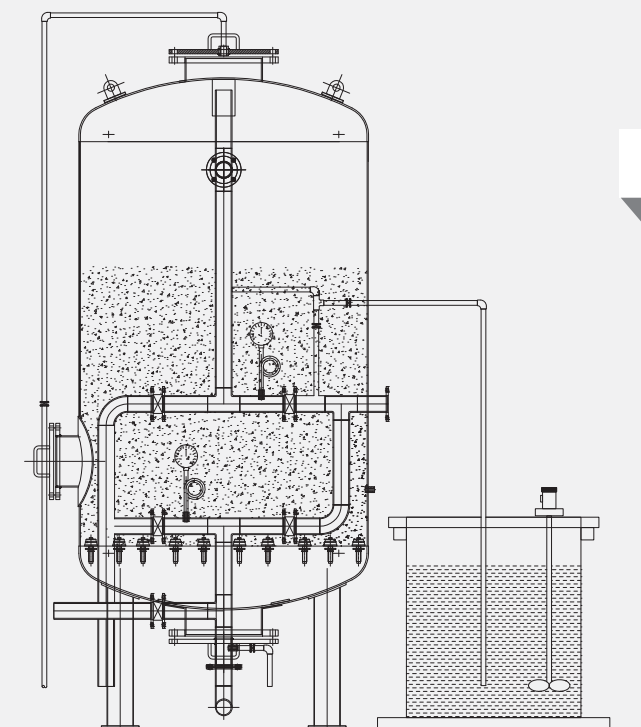
www.excelmech.com.my



WATER SOFTENER

Water Softener is used to remove minerals such as calcium, magnesium, and certain other metal cations in hard water. Reducing the tendency of scale being formed in equipment such as Boiler, pipelines, and engine jackets.

DESCRIPTION



- Designed and fabricated to ASME code for Unfired Pressure Vessel.
- Mild steel and stainless steel for shell and dished end.
- Complete with frontal piping and butterfly valves, filter nozzles, resin.
- Internal surface to be sand blasted to SA2 ½ and painted with 2 coats Epoxy food grade paint.
- Working pressure: 350 kPa to 500 kPa.
- All flanged nozzles to be provided with matching Flanges and bolt and nuts.
- Design drawing to be approved by D.O.S.H. Malaysia.
- Well design bottom distribution system c/w quality PP nozzles ensures uniform distribution flow of water through the resin bed.

For further information, please contact sales office, or:



Excelmech Engineering Sdn. Bhd. (Company No. 862039-X)

Lot 2828, Jln Kelkati 32/168, Off Jln. Sri Gambut Bukit Naga,
Seksyen 32, 40460 Shah Alam, Selangor Darul Ehsan, Malaysia.
Tel: 603-5167 1589 Fax: 603-5167 2588
E-mail: contact@excelmech.com.my



EXCEL VACUUM DEAERATOR



Palm Oil Mill Equipment Specialist

www.excelmech.com.my

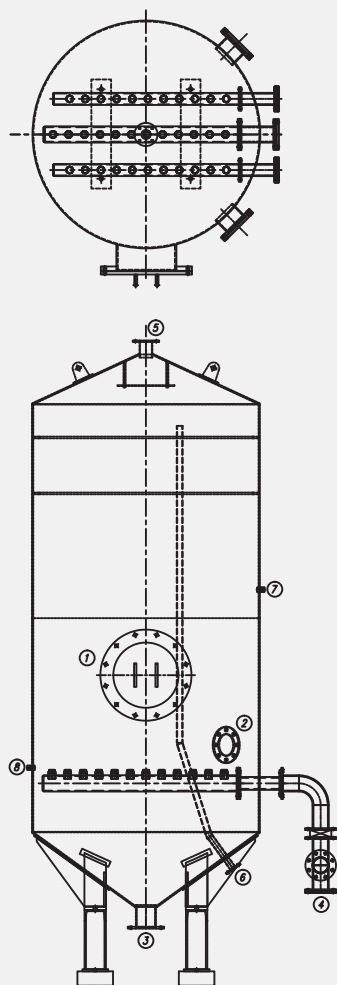


VACUUM DEAERATOR

SPECIFICATION

Design Code	: ASME SECT. VIII DIV 1
Working Pressure	: Vacuum
Design Pressure	: Vacuum
HT Pressure	: 130 kPa
Medium of Service	: Hot Water
Joint Efficiency	: Shell 0.7 (Table UW-12) Conical Head 0.7 (Table UW-12)
Capacity	: Range from 5 tons to 40 tons

DESCRIPTION



Nozzles:

1. Manhole	5. Ejector connection
2. Sight glass	6. Vapour Outlet
3. Water outlet	7. Vacuum Gauge
4. Water inlet	8. Level Gauge

For further information, please contact sales office, or:



Excelmech Engineering Sdn. Bhd. (Company No. 862039-X)

Lot 2828, Jln Kelkati 32/168, Off Jln. Sri Gambut Bukit Naga,
Seksyen 32, 40460 Shah Alam, Selangor Darul Ehsan, Malaysia.
Tel: 603-5167 1589 Fax: 603-5167 2588
E-mail: contact@excelmech.com.my



SCAN ME

EXCEL THERMAL DEAERATOR



Palm Oil Mill Equipment Specialist

www.excelmech.com.my

THERMAL DEAERATOR

SPECIFICATION

Design Code	: ASME Section VIII Div. 1
Design Pressure	: 350 kPaG
Design Temperature	: 150 °C
Medium of Service	: Hot Water and Steam
Construction Material	: Stainless Steel & Mild Steel
Capacity	: Range from 10 tons/hr to 60 tons/hr

PACKAGE INCLUDES

- Modulating Water Control Valve Station
- Thermal Deaerator Feed Pump Station
- Pressure Reducing Valve (PRV) Station
- Thermal Deaerator Control Systems c/w TAIE PID Controller, Electric Motor Starter, MCB, Relays, Terminal Blocks Push Buttons, Selector Switches, Indicator Light, AVR, Beacon Light and Siren.
- Water Level Chamber c/w level indicator and probe type Level Transmitter
- Temperature Gauge, Pressure Gauge, Vacuum Breaker and Safety Relief Valve
- Thermal Deaerator support structure and platform.

For further information, please contact sales office, or:



Excelmech Engineering Sdn. Bhd. (Company No. 862039-X)

Lot 2828, Jln Kelkati 32/168, Off Jln. Sri Gambut Bukit Naga,
Seksyen 32, 40460 Shah Alam, Selangor Darul Ehsan, Malaysia.
Tel: 603-5167 1589 Fax: 603-5167 2588
E-mail: contact@excelmech.com.my



SCAN ME

EXCEL REVERSE OSMOSIS SYSTEM



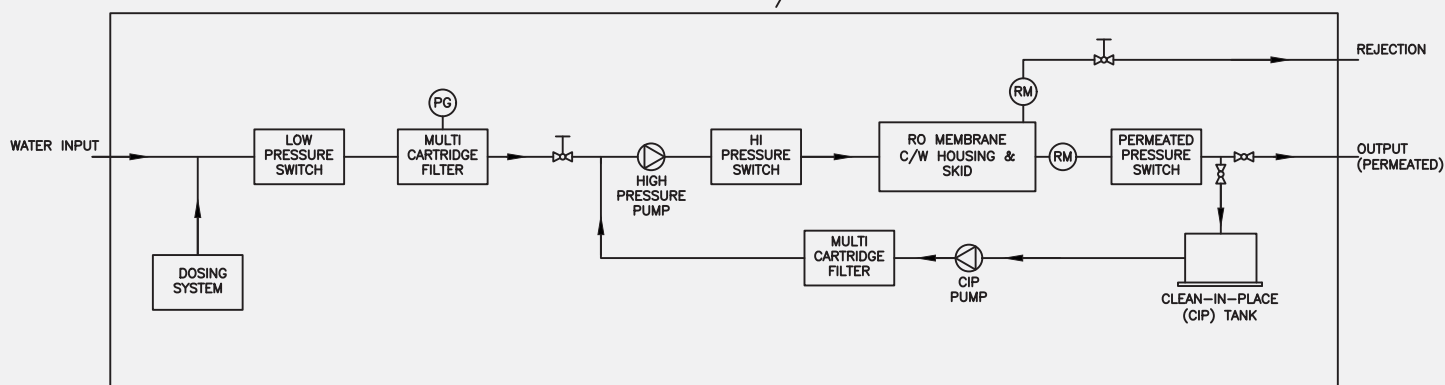
Palm Oil Mill Equipment Specialist

www.excelmech.com.my



REVERSE OSMOSIS SYSTEM

RO SYSTEM C/W CIP SYSTEM



RO APPLICATION AREA

Food, beverage, drinking water, textile, marine, mining, oil
 Chemical & pharmaceutical industry
 Electronic industry, semiconductor industry requiring
 ultrapure water treatment
 Waste water treatment
 Brackish water desalination, sea water desalination,
 metallurgy, and light industry pure water treatment.
 Cosmetic products, car battery, liquid fertilizer production
 pure water treatment
 Boiler water treatment
 School, hotel, hospital, laboratory, surface treatment,
 hydraulic test, industrial boiler, power station boiler, high
 pressure boiler water treatment

STANDARD FEATURE

Range: 5,000 LPH to 100,000 LPH
 3 RO Pre-Treatment Dosing System
 Multi Cartridge Filter
 High Pressure Feed Pump
 Thin Film Nanocomposite (TFN) RO Membrane
 FRP RO Membrane Housing
 High & Low Pressure Switches
 Rotameter & Pressure Gauges
 RO Program Controller c/w Conductivity / TDS Meter
 Clean In Place (CIP) System, which consist of Multistage Pump,
 Multi Cartridge Filter & CIP Tank
 May also include chemical & test kit

For further information, please contact sales office, or:



Excelmech Engineering Sdn. Bhd. (Company No. 862039-X)

Lot 2828, Jln Kelkati 32/168, Off Jln. Sri Gambut Bukit Naga,
 Seksyen 32, 40460 Shah Alam, Selangor Darul Ehsan, Malaysia.
 Tel: 603-5167 1589 Fax: 603-5167 2588
 E-mail: contact@excelmech.com.my



EXCEL THRESHER



Palm Oil Mill Equipment Specialist

www.excelmech.com.my



THRESHER



INTRODUCTION

To detach the fruitlets from the sterilized fruit bunch.

CONSTRUCTION

- 4 columns are provided with MS channel ties.
- Side panel plate using MS plate with openable service door and chute.
- Top operating platform using MS chequer plate, support beam and handrails.
- Shafted Rotating drum are support with 2 units of heavy duty bearings at both ends of the shaft.
- Shaftless rotating drums are support with 4 sets of cast steel roller c/w stopper.
- Drums are using MS plate cut into rings/spider arm (shafted) c/w longitudinal MS flat bar. Lifter provided inside drum to lift up bunches.



DESCRIPTION

- | | |
|--------|---|
| Size | : 10 tons, 20 tons, 30 tons, 45 tons, 60 tons |
| Drive | : Gear head powered by motor with belt and pulley.
Final operating drum speed of 22-25 rpm |
| Others | : Double drum threshing machine can be provided |

For further information, please contact sales office, or:



Excelmech Engineering Sdn. Bhd. (Company No. 862039-X)

Lot 2828, Jln Kelkati 32/168, Off Jln. Sri Gambut Bukit Naga,
Seksyen 32, 40460 Shah Alam, Selangor Darul Ehsan, Malaysia.
Tel: 603-5167 1589 Fax: 603-5167 2588
E-mail: contact@excelmech.com.my



SCAN ME

EXCEL FFB CAGE TRANSFER CARRIAGE

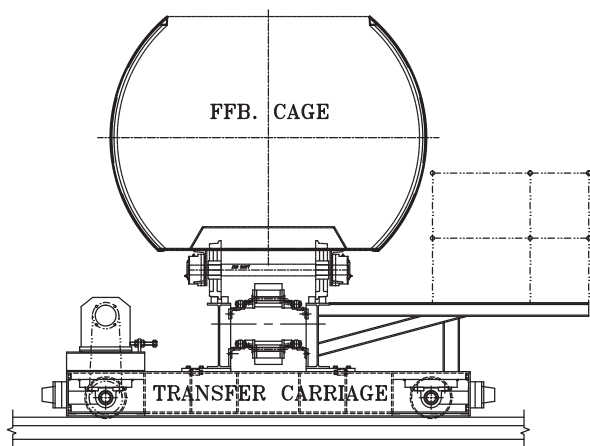


Palm Oil Mill Equipment Specialist

www.excelmech.com.my



FFB CAGE TRANSFER CARRIAGE



FUNCTION

FFB cage transporter to transfer cage from one rail tracks to another.

CONSTRUCTION

- The transporter sits in a pit c/w rail lines.
- Main frame of MS plate, U beam, channel and angle c/w operating platform.
- The car is driven by hydraulic motor.
- FFB cage charge and discharge can be operated with conveyor chain system or indexing system.
- Position locking system is provided during FFB cage charge and discharge.

DESCRIPTION

- | | |
|--------|---|
| Size | : Size of capacity can be ranged from 5 tons to 30 tons, depending on needs. |
| Drive | : Operated with hydraulic motor to control the car movement as well as cage movement. |
| Others | : Easy installation and low maintenance and high safety. Can be automated easily. |

For further information, please contact sales office, or:



Excelmech Engineering Sdn. Bhd. (Company No. 862039-X)

Lot 2828, Jln Kelkati 32/168, Off Jln. Sri Gambut Bukit Naga,
Seksyen 32, 40460 Shah Alam, Selangor Darul Ehsan, Malaysia.
Tel: 603-5167 1589 Fax: 603-5167 2588
E-mail: contact@excelmech.com.my



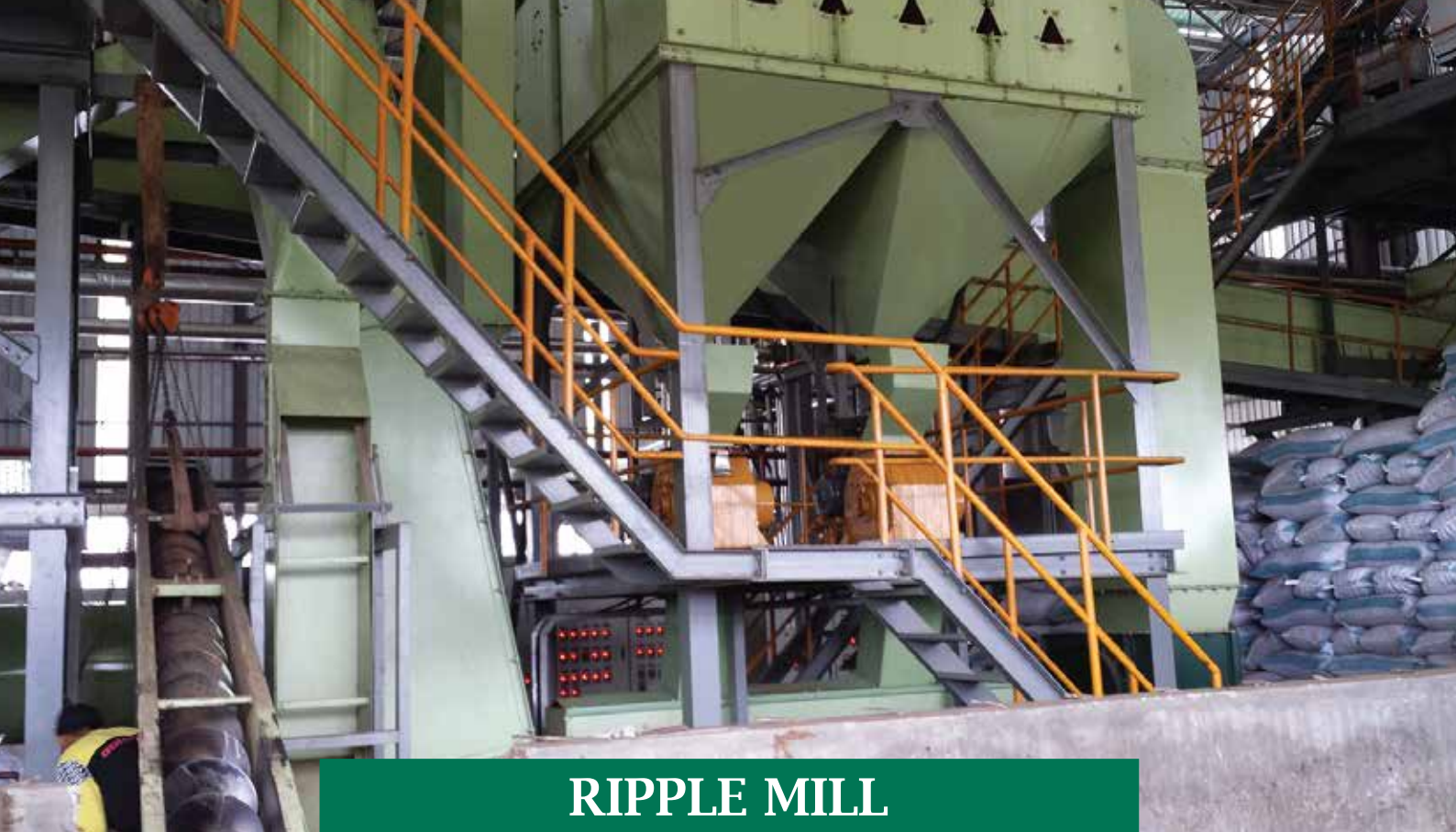
SCAN ME

EXCEL RIPPLE MILL



Palm Oil Mill Equipment Specialist

www.excelmech.com.my



RIPPLE MILL

INTRODUCTION

Ripple Mill has been used for nut cracking in kernel recovery station in palm oil mills for many years. Many palm oil mills using ripple mills has achieved high cracking efficiencies with acceptable broken kernel, minimum maintenance and low maintenance cost. The capacity is 8 Metric Ton.

ADVANTAGES

- High cracking efficiency
- Easy operation and minimum maintenance is required
- Space saving compact design
- Easy installation

ITEM

Rotor Shaft
Ripple Rod
Rotor Ring Plate
Bearing
Footing Frame
Motor

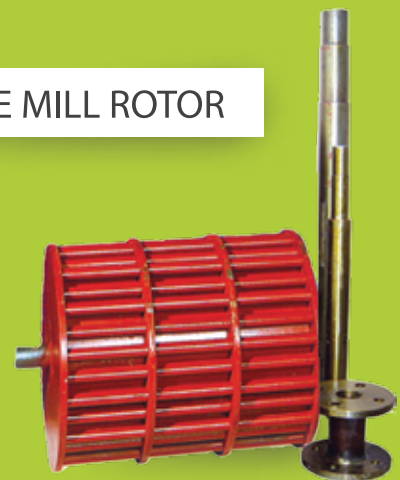
MATERIAL

: S45C c/w Bearing SNH513
: Polished Shaft c/w Sch 40 pipe
: Mild Steel
: Plummer Block Bearing
: Mild Steel Channel Housing Shell
: 20 HP x (380 – 440) V x (1,450 / 1,740) rpm,
(50 / 60) Hz
: Pulley with SPB V-belt 3 pcs c/w belt guard
: Cracking Efficiency > 98%,
Broken Kernel < 10%

RIPPLE MILL



RIPPLE MILL ROTOR



For further information, please contact sales office, or:



Excelmech Engineering Sdn. Bhd. (Company No. 862039-X)

Lot 2828, Jln Kelkati 32/168, Off Jln. Sri Gambut Bukit Naga,
Seksyen 32, 40460 Shah Alam, Selangor Darul Ehsan, Malaysia.
Tel: 603-5167 1589 Fax: 603-5167 2588
E-mail: contact@excelmech.com.my



SCAN ME

EXCEL MOVING FLOOR

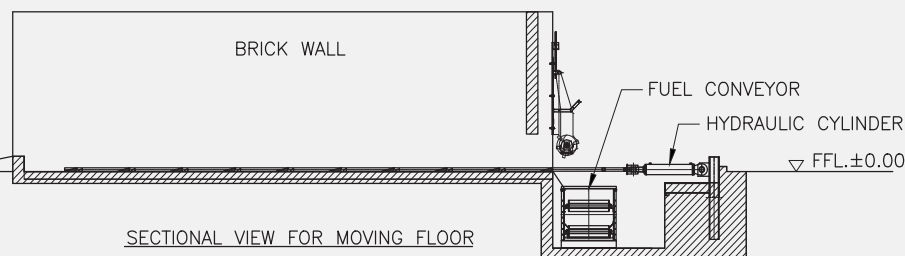


Palm Oil Mill Equipment Specialist

www.excelmech.com.my



MOVING FLOOR



FUNCTION

Provides sufficient storage of biomass fuel like EFB fibre, Palm fibre, Palm shell, wood chips etc. Regulate constant feed of fuel to boiler to maintain boiler pressure without interruption from the inconsistent of fuel from the process.

CONSTRUCTION

- Moving Frame MS Solid Square bar c/w long wedge.
- Cast in situ base frame MS channel c/w stator wedge.
- Moving frame is operated by hydraulic cylinders c/w power pack. Fuel leveler to control the fuel drop into the conveyor system.

DESCRIPTION

- | | |
|--------|---|
| Size | : Size of capacity can be ranged from 10 tons to 30 tons, depending on needs. |
| Drive | : Operated with hydraulic system c/w independent cylinder, hydraulic pump and accessories. Direct gearmotor to run the fuel leveler. |
| Others | : Easy installation and low maintenance and high safety. Complete fuel management system allows recycling of excess feed to boiler back into the moving storage hopper. |

For further information, please contact sales office, or:



Excelmech Engineering Sdn. Bhd. (Company No. 862039-X)

Lot 2828, Jln Kelkati 32/168, Off Jln. Sri Gambut Bukit Naga,
Seksyen 32, 40460 Shah Alam, Selangor Darul Ehsan, Malaysia.
Tel: 603-5167 1589 Fax: 603-5167 2588
E-mail: contact@excelmech.com.my



SCAN ME

EXCEL HYDROCYCLONE

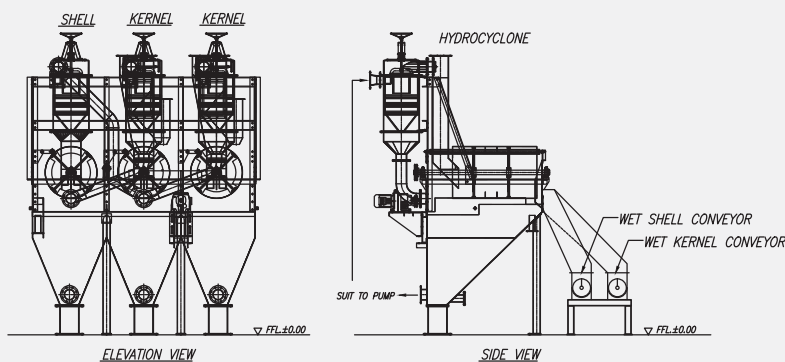


Palm Oil Mill Equipment Specialist

www.excelmech.com.my



HYDROCYCLONE



FUNCTION

To separate the shell and kernels from LTDS crack mixture by pumping water with velocity in cylinders, resulting to separation of kernel surface on top and shell goes under the cone. Vibrating Screens/Drums are used to dewater kernel/shells.

CONSTRUCTION

Water Hopper made of MS or SS304 Cylinder made of MS material, lined with cast iron/chrome steel liner. Bottom cone are Ni-hard to be wear resistance. Dewatering drums/vibrating screen are made of SS304 with perforated holes screen. Pumps are provided with material SS shaft, impeller and casing.

DESCRIPTION

Size	: Size of capacity can be ranged from 5 tons to 30 tons, depending on needs.
Drive	: Rotating drum/vibrating screen with 2.2kw motor @ 16rpm
Pumps	: 80m ³ -120m ³ /hr @ 10m head
Others	: Can be custom made to 2 stages or 3 stages

For further information, please contact sales office, or:



Excelmech Engineering Sdn. Bhd. (Company No. 862039-X)

Lot 2828, Jln Kelkati 32/168, Off Jln. Sri Gambut Bukit Naga,
Seksyen 32, 40460 Shah Alam, Selangor Darul Ehsan, Malaysia.
Tel: 603-5167 1589 Fax: 603-5167 2588
E-mail: contact@excelmech.com.my



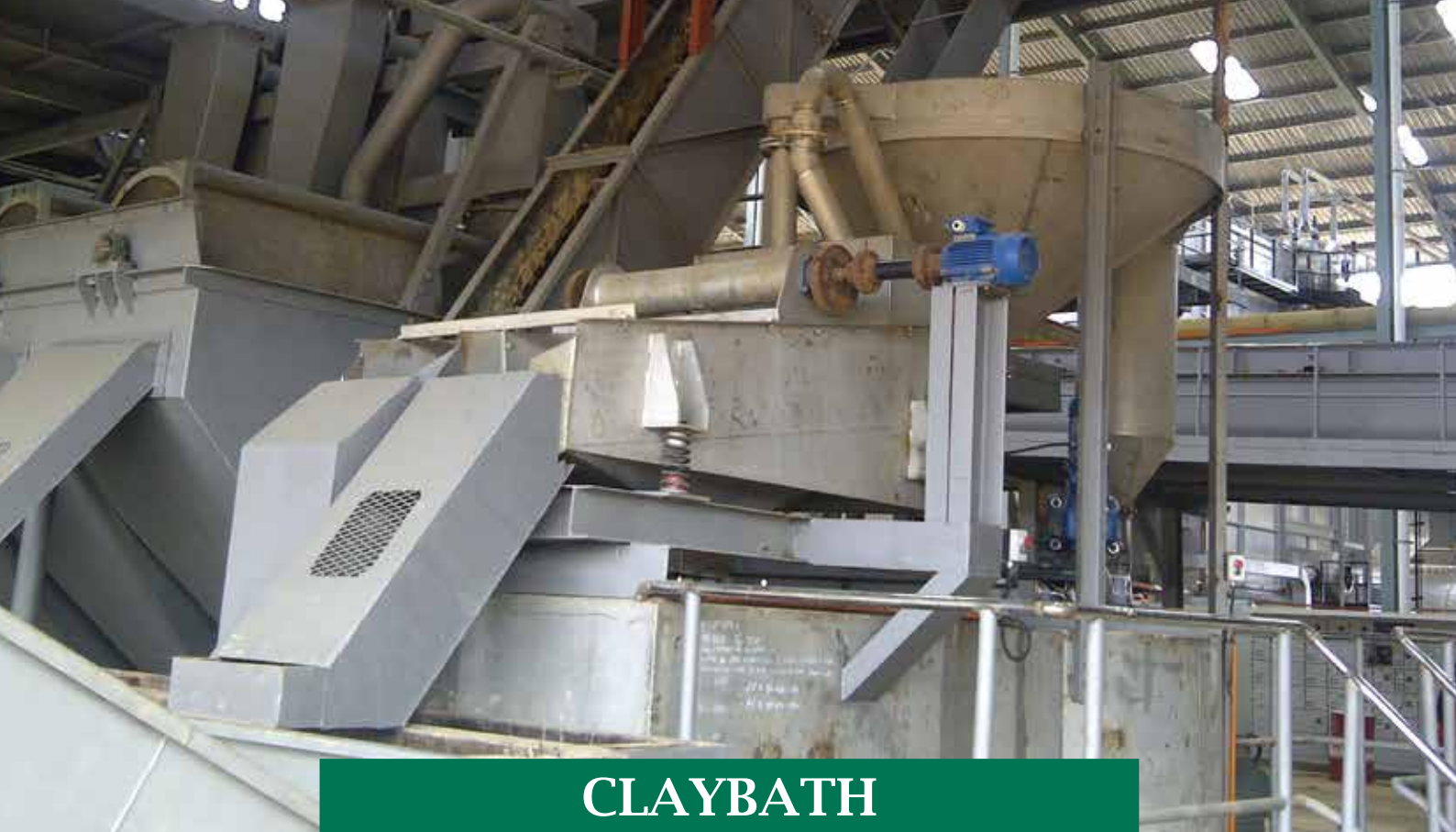
SCAN ME

EXCEL CLAYBATH



Palm Oil Mill Equipment Specialist

www.excelmech.com.my



CLAYBATH

FUNCTION

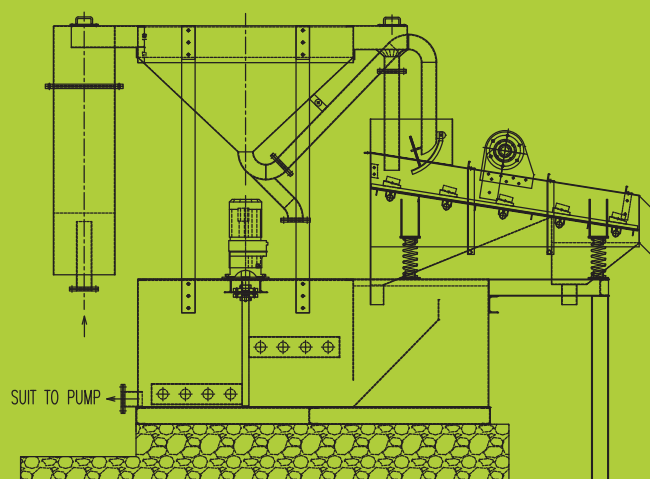
To recover fine and broken kernels from LTDS crack mixture or from the Hydro-cyclone Clay Solution is used to maintain a relative density of Kernel/shell to 1.12. By pumping the clayed crack mixture into the expansion chamber and conical chambers, the circulating force will result to heavier shell being separated from Kernel hydraulically. Separated shell and kernel are dewatered with vibrating screens.

CONSTRUCTION

Mixing Tank, Expansion Chamber and Conical Chamber can be made of Mild steel or Stainless Steel. Dewatering Vibrating Screen is made of SS304 with perforated holes screen. Pumps are provided with material SS shaft, impeller and casing.

DESCRIPTION

Size	: 20 tons, 30 tons, 45 tons FFB TPH
Drive	: Double Vibratory Motor with 0.5kw to 1.5kw for Vibrating Screen Vertical stirrer with 20rpm driven by 1.5kw gearmotor
Pumps	: 30m ³ /hr @ 5m head
Others	: Gauged and fittings, maintenance Platform, staircase and support



For further information, please contact sales office, or:



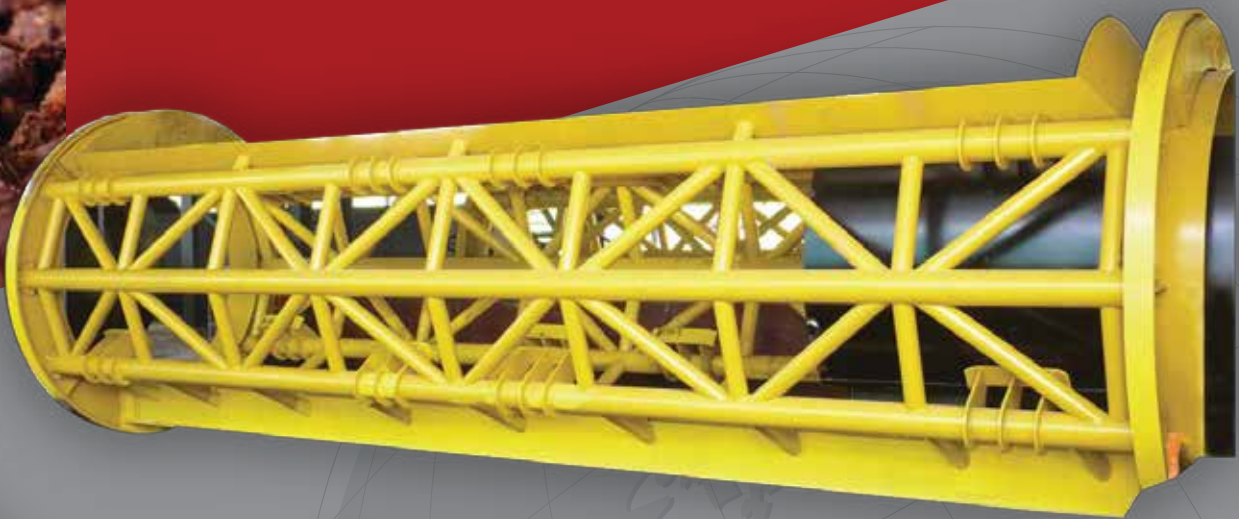
Excelmech Engineering Sdn. Bhd. (Company No. 862039-X)

Lot 2828, Jln Kelkati 32/168, Off Jln. Sri Gambut Bukit Naga,
Seksyen 32, 40460 Shah Alam, Selangor Darul Ehsan, Malaysia.
Tel: 603-5167 1589 Fax: 603-5167 2588
E-mail: contact@excelmech.com.my



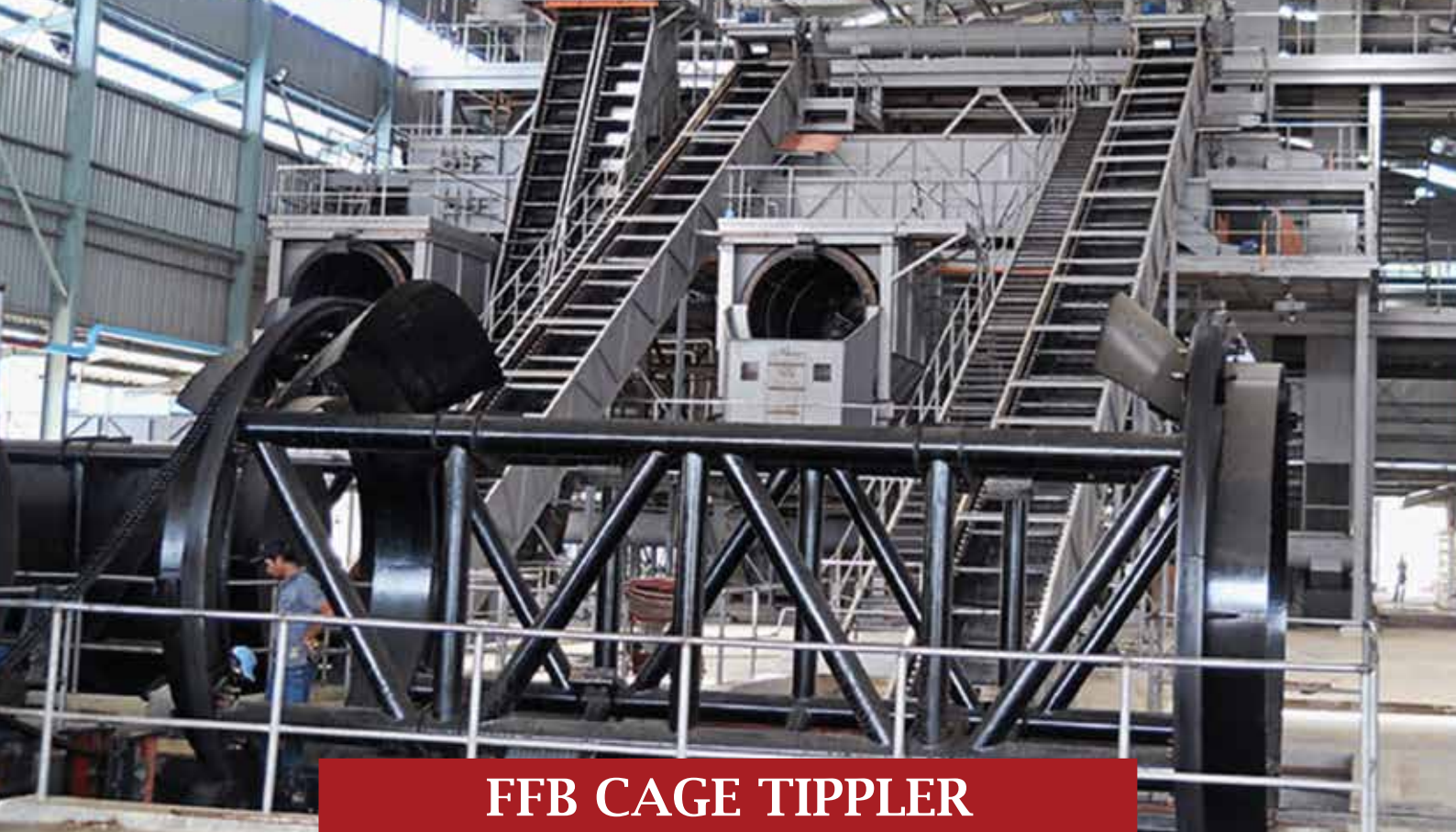
SCAN ME

EXCEL FFB CAGE TIPLER



Palm Oil Mill Equipment Specialist

www.excelmech.com.my



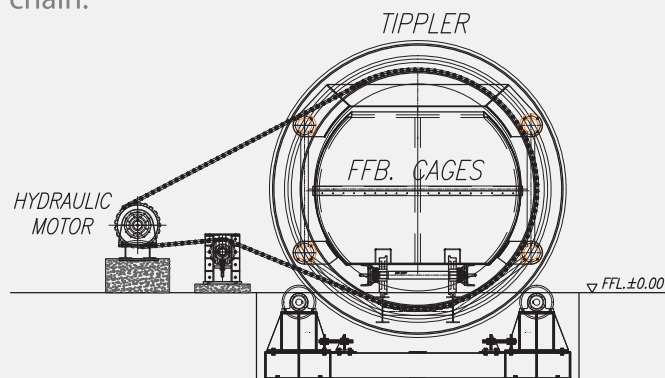
FFB CAGE TIPPLER

FUNCTION

Holding Frame to rotate FFB cage to allow SFB to be discharged into bottom hopper. Act as a buffer to control the volume of SFB discharged into bottom hopper.

CONSTRUCTION

2 pieces of rotating Ring made of MS plate c/w machined Square bar ring. The rotating rings are connected with truss MS pipes and I beam. Bottom rail MS I beam, rail bar and chequer plate. Rotation is facilitated with counter weight 4 sets of Cast steel roller c/w stopper roller and base frame for tippler to sit on. The whole drum is connected to hydraulic motor with roller chain.



DESCRIPTION

- Size : Size of capacity can be ranged from 5 tons to 30 tons, depending on needs.
- Drive : Operated with hydraulic motor to control the rotation of tippler. Bottom hopper discharge controlled with hydraulic cylinder to regulate the feed into sterilizer fruit bunch conveyor.
- Others : Easy installation and low maintenance and high safety. Ensure steady feed of SFB into conveyor.



For further information, please contact sales office, or:



Palm Oil Mill Equipment Specialist

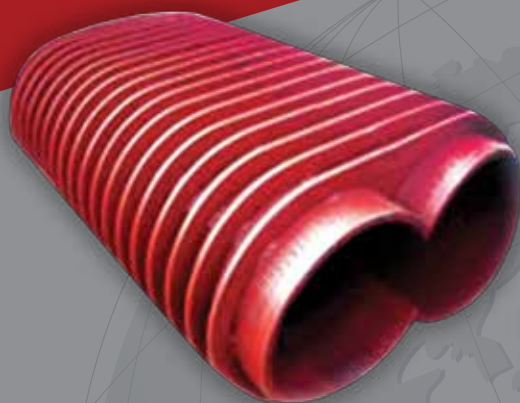
Excelmech Engineering Sdn. Bhd. (Company No. 862039-X)

Lot 2828, Jln Kelkati 32/168, Off Jln. Sri Gambut Bukit Naga,
Seksyen 32, 40460 Shah Alam, Selangor Darul Ehsan, Malaysia.
Tel: 603-5167 1589 Fax: 603-5167 2588
E-mail: contact@excelmech.com.my



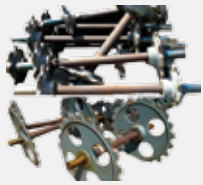
SCAN ME

EXCEL PALM OIL MILL SPARE PARTS



Palm Oil Mill Equipment Specialist

www.excelmech.com.my



Sprocket & Coupling



Pump



Worm Screw



Conveyor & Transmission Chain



Bearing



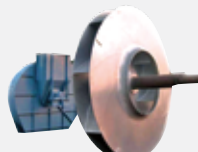
Conveyor Sprocket



Hanger Bearing



Chain Coupling



Fan Impeller



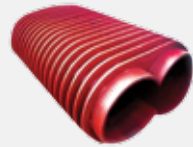
Flexible Coupling



Vibrating Screen Wire Mesh



Hydrocyclone Vortex



Press Cage



Ribbon Screw



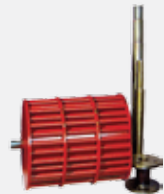
Digester Shaft, Blade & V-Arm



Wheels



Sludge Centrifuge



Ripple Mill Rotor



Thresher



Roller Support



Dish End & Door Seals

SPARE PART

Excelmech Engineering Sdn Bhd. supplies spare parts and components for equipment in palm oil mills. Our range of supply includes:

CASTING PART

- Screw Press Worm Screw, Spur Gearbox Housing, Press Cone.
- Digester V block, Beater Arm and Expeller Arm.
- FFB Cage Bearing Housing Block, Bush, and Wheel.
- Boiler Fire Grate Bars, Fire Doors, Dust Collector Cyclone.
- Elevator / Conveyor Sprocket and Coupling.
- Screw Conveyor Hanger Bearing and Bush.
- Hydrocyclone Vortex, Cone and Dome Chambers Casting.
- Pump Casing, Impeller, Seal and Shaft.
- Support Rollers and Path Rings for Cage Tipplers.
- Rope Drums for Winches and Capstans.
- Support rollers and path rings for the cage tippers.
- Rope drums for winches and capstans.

FABRICATED MACHINED PARTS

- Screw Press Press Cage, Drive and Driven Shafts.
- Sludge Centrifuge Bowls, Nozzles, Bearings, Shafts.
- Sterilizer Door Dished End Liner.
- Ripple Mill high wear Rods, Shafts, Bearings.
- Vibratory Screens, Mesh, and components.
- Fans Impellers, Cone and Shaft.
- Ripper Mill Rotor.
- Hydraulic System components.
- Bearing and Belts.

For further information, please contact sales office, or:



Palm Oil Mill Equipment Specialist

Excelmech Engineering Sdn. Bhd. (Company No. 862039-X)

Lot 2828, Jln Kelkati 32/168, Off Jln. Sri Gambut Bukit Naga, Seksyen 32, 40460 Shah Alam, Selangor Darul Ehsan, Malaysia.
Tel: 603-5167 1589 Fax: 603-5167 2588
E-mail: contact@excelmech.com.my



SCAN ME

EXCEL M-LINER



Palm Oil Mill Equipment Specialist

www.excelmech.com.my



WEAR LINERS FOR SCRAPER CONVEYOR CHAIN

INTRODUCTION

M-Liners is made of Ultra High Molecular Weight Polyethylene(UHMW-PE) material, a type of thermo-plastic, which combines the featured characteristics of all types of plastics, excellent in withstanding wear and tear, impact resistance and chemical corrosion, self-lubricating, working against low temperature, low in abrasion loss, absorbing energy, anti-ageing and preventing build-up of static electricity.

It is widely used as conveyor wear lining for palm oil mills; interior lining of the coal house of thermo power plant, coal mines and coking plants etc; wear lining for storage tanks in cement factories, steel mills and aluminium factories, the granary of food industry, feedstuff industry and pharmaceutical factories, hoppers at wharfs as well as lining for cabin of bulk ships. It prevents powder material sticking on cabin and reduces the damage to cabin wall by loading machinery, due to non-material sticking properties, it can speed up loading process, reduce clogging significantly.

A

Extremely high anti-abrasion: Owing to its particular molecular structure, anti-abrasion performance of UHMW-PE is higher than ordinary metal and plastic: 6.6 times of carbon steel, 5.5 times of stainless steel, 27.3 times of brass, 6 times of nylon and 5 times of PTFE.

Material	UHMW-PE	PTFE	Nylon 6	A3 Steel	PERed	Copper
Wearing rate	0.32	1.72	3.30	7.36	8.63	13.12

B

Excellent self-lubricating performance, low friction coefficient and flow resistance, resulting in low energy consumption.

Material	UHMW-coal	Cast stone	Stain steel plate-coal	Stain steel plate-coal	Concrete-coal
Wearing coefficient	0.15-0.25	0.30-0.45	0.45-0.58	0.30-0.40	0.60-0.70

C

Good in resisting impact, flexibility. Even under low temperature and thunder impact, it does not break. It doesn't become fragile even under -180°C surrounding temperature.

Material	UHMW-coal	Cast stone plate	PAE 6	POM	F4	A3	45"
Impact Intensity (kg/m3)	100-160	1.6-15	6-11	8-13	16	300-400	700

D

Excellent in resisting chemical corrosion: it works against all acid, alkali, salt medium except concentrated sulphuric acid, dense nitric acid and some organic solvent.

E

Free from toxin, smell or exudates.

F

Good electric resistance, relatively low in water absorption.

G

Good performance in resisting environment stress crack, 200 times of ordinary PE.



For further information, please contact sales office, or:



Excelmech Engineering Sdn. Bhd. (Company No. 862039-X)

Lot 2828, Jln Kelkati 32/168, Off Jln. Sri Gambut Bukit Naga,
Seksyen 32, 40460 Shah Alam, Selangor Darul Ehsan, Malaysia.
Tel: 603-5167 1589 Fax: 603-5167 2588
E-mail: contact@excelmech.com.my



SCAN ME

EXCEL BUCKET STRAINER



Palm Oil Mill Equipment Specialist

www.excelmech.com.my



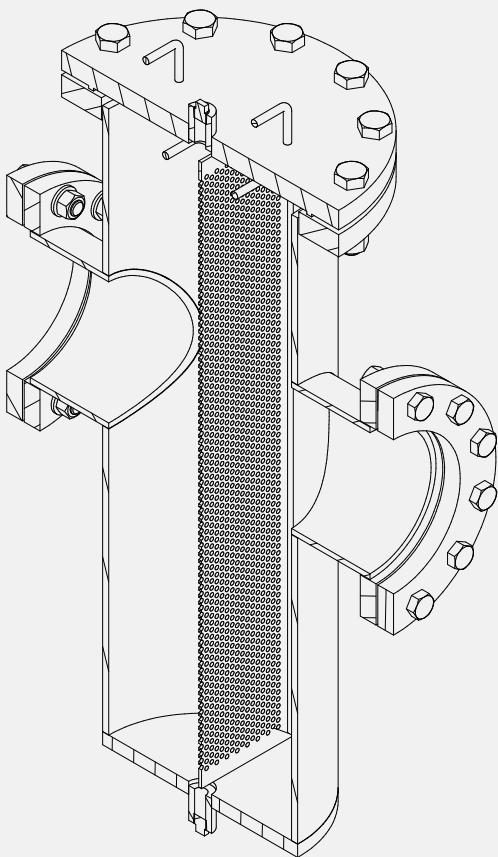
BUCKET STRAINER

MAIN FEATURES

Bucket Strainer is used as a closed vessel with cleanable or removable strainer or mesh screen for removing foreign particles in a horizontal pipeline.



SPECIFICATION



Dimension (Body x Nozzle)	8" x 4" / 10" x 6" / 12" x 8"
Body & Nozzle Material	Carbon Steel / Stainless Steel
Flange Type	Any
Strainer	SS304 c/w Ø3mm Perforated Holes
Design Pressure	10 barg / 145 psig
Design Temperature	90 °C
Design Code	ASME SECT. VIII DIV. 1 2019
Medium	Oil / Water

For further information, please contact sales office, or:



Palm Oil Mill Equipment Specialist

Excelmech Engineering Sdn. Bhd. (Company No. 862039-X)

Lot 2828, Jln Kelkati 32/168, Off Jln. Sri Gambut Bukit Naga,
Seksyen 32, 40460 Shah Alam, Selangor Darul Ehsan, Malaysia.
Tel: 603-5167 1589 Fax: 603-5167 2588
E-mail: contact@excelmech.com.my



SCAN ME