

EXCEL CLUTCH DOOR

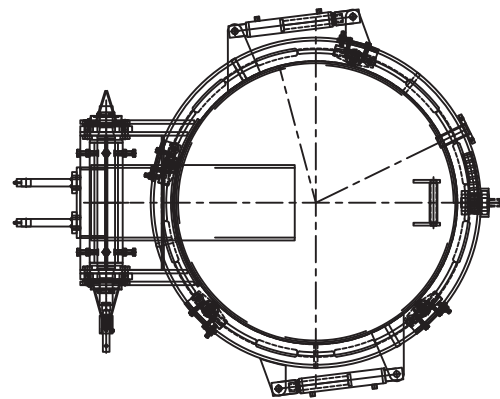
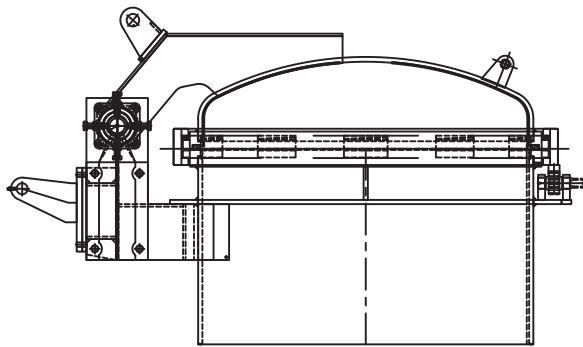


Palm Oil Mill Equipment Specialist

www.excelmech.com.my



CLUTCH DOOR



SPECIFICATION

Model	Excel 09, Excel 10, Excel 12, Excel 15, Excel 17 - Excel 32
Diameter (mm)	900, 1,000, 1,200, 1,500, 1,700, 2,100, 2,700, 3,200
Type	Rapid Opening or Closing Rotating Clutch Type
Dished End Material	Boiler Plate SA.516 Gr. 70 / Mild Steel / Stainless Steel
Shell Plate / Neck	Boiler Plate SA.516 Gr. 70 / Mild Steel / Stainless Steel
Dished End Liner	Stainless Steel 304 / Mild Steel
Lock Ring	Boiler Plate SA.516 Gr. 70
Dished / Shell Flanges	Boiler Plate SA.516 Gr. 70
Design Pressure	50 – 200 psig / 350 – 1,380 kPag
Design Approval & HT	D.O.S.H Malaysia / Third Party Authority
Radiography Test	100% on Lock Ring, Dished End Flange and Shell Flange

For further information, please contact sales office, or:



Excelmech Engineering Sdn. Bhd. (Company No. 862039-X)

Lot 2828, Jln Kelkati 32/168, Off Jln. Sri Gambut Bukit Naga,
Seksyen 32, 40460 Shah Alam, Selangor Darul Ehsan, Malaysia.
Tel: 603-5167 1589 Fax: 603-5167 2588
E-mail: contact@excelmech.com.my



SCAN ME